



**COLD FORMED STEEL PROFILES  
AND SEAMED TUBES**

**[WWW.VALUEIMPEX.PL](http://WWW.VALUEIMPEX.PL)**



## Technical Laboratory & Research and Development (R&D)

We maintain our quality perspective by performing physical & chemical tests in our own in house laboratories and R&D center, from raw material to finished products.

## Tooling

The design and production of our molds and fixtures, that are using in every stage of the production, are produced by our own experienced technical team.





# Magnelis®

## The harshest environments need the toughest skin protection

Magnelis® is an exceptional, new metallic steel coating providing surface protection in a variety of applications against long-term wear and tear.

This unique coating offers a combination of attributes. Magnelis® provides:

The best corrosion resistance performance; up to 10 times better than galvanised steel

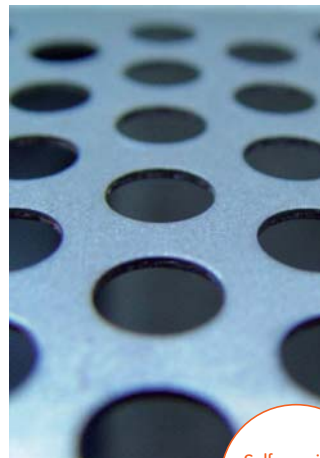
The best suited protection to withstand harsh environments

The most cost-effective alternative to the post-galvanised process

### Magnelis® examples of applications



Environmentally friendly



Self-repairing protection for cut edges



An alternative to the post-galvanising process and to aluminium or stainless



Superior corrosion resistance in chloride and ammonia environments





## Magnelis® Technology

Magnelis® is produced on a conventional industrial hot dip galvanizing line. The steel substrate is dipped in a molten bath to apply a metallic zinc coating with a unique chemical composition comprising 3.5% aluminum and 3% magnesium. This 3% magnesium is crucial, as it creates a stable and durable layer across the entire surface, ensuring far more effective corrosion protection than coatings with a lower magnesium content. Comparative tests have shown that ArcelorMittal's Magnelis® offers significantly better performance than alternative European products.

## Magnelis® Durability

The Magnelis® coating provides a smooth surface with a uniform coating thickness, purpose designed to perform in general, and construction applications.

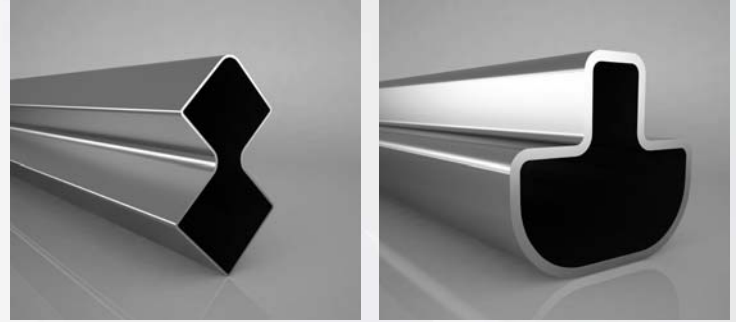
Magnelis® is an exceptional, new metallic steel coating providing surface protection in a variety of applications against long term wear and tear.

This unique coating offers a combination of attributes.

- The best corrosion resistance performance; up to 10 times better than galvanized steel
- The best suited protection to withstand harsh environments
- The most cost-effective alternative to the post-galvanized process
- Magnelis® has a natural dark grey, spangle-free smooth aesthetic appearance.
- Magnelis® is the optimal coating to protect against atmospheric corrosion,  
it: Withstands the harshest of environments the destruction of coating that occurs in an ammonia environment is seven times less with Magnelis® than with a standard zinc coating and in highly alkaline environments (those with a pH between 10 and 13)  
Magnelis® corrosion resistance trumps other metallic coatings
- Protects exposed cut edges from corrosive reactions thanks to a thin zinc-based protective film with magnesium
- Guarantees a longer-lasting, active coating protection over time

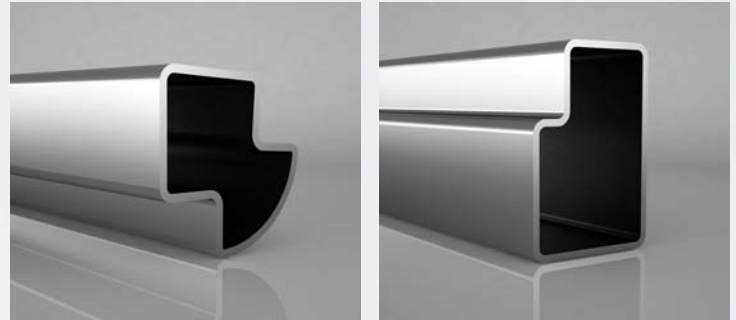
## Welding of Magnelis®

- Most used welding processes are suitable with Magnelis® coating; GMAW, TIG, HFI, Spot, Laser, Plasma etc..
- Welding parameters for Magnelis® are similar to galvanized material welding parameters
- Despite lower coating thickness it provides the same corrosion resistance besides improved weldability.
- For corrosion protection it is necessary to re-apply over the welded point.



## Magnelis® Welding Protection

- As with other coatings, Magnelis® coating can be damaged in the welding zone. Depending on the application, the corrosion resistance – thanks to the self-healing effect of Magnelis® coating can be sufficient. If not, measures can be taken to re-protect the weld zone.
- Re – protection of weld via application of a layer of typically Al, Al/Zn (e.g. 85%/15%) or Zn which can be applied by Electric Arc Spraying and/or painting/brushing.



## Self-healing Property

One of the most remarkable properties of Magnelis® is its ability to self-heal on cut edges. This is typically where corrosion begins.

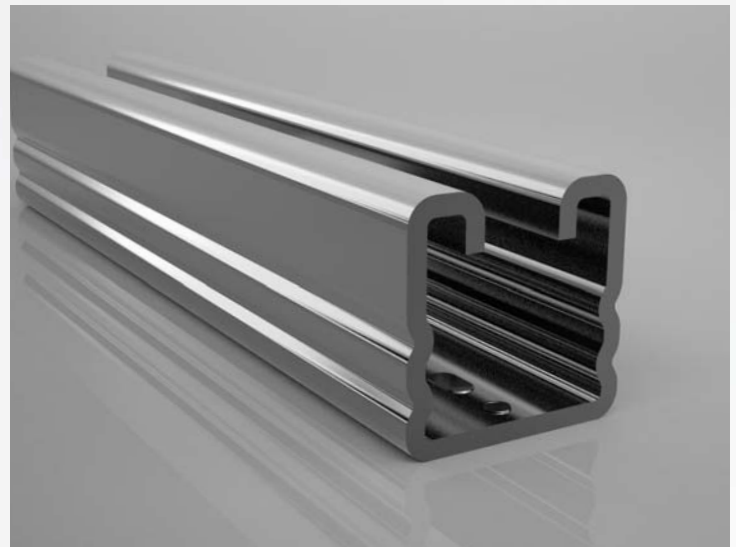
A zinc-based protective film containing magnesium forms on the cut edge to protect it from the environment.

Magnelis® also demonstrates superior performance in industry-standard salt spray tests. Steels coated with Magnelis® showed no signs of corrosion weeks after other samples were completely corroded. Magnelis® performs more than three times better than galvanized steels.



## Magnelis® Excellent Workability

Thanks to its highly resistant, adherent metallic layer, Magnelis® can be formed in a variety of methods, including bending, drawing, profiling etc. By decreasing the amount of metallic coating, while safeguarding corrosion resistance levels, spot welding is consequently improved. A protective oxide barrier covers the weld, preventing the development of red rust. Thinner coating facilitates processing and delivers substantial savings. Magnelis® performs three times better than standard galvanized steel, reduces powdering effect and loses less coating weight in processing tools.

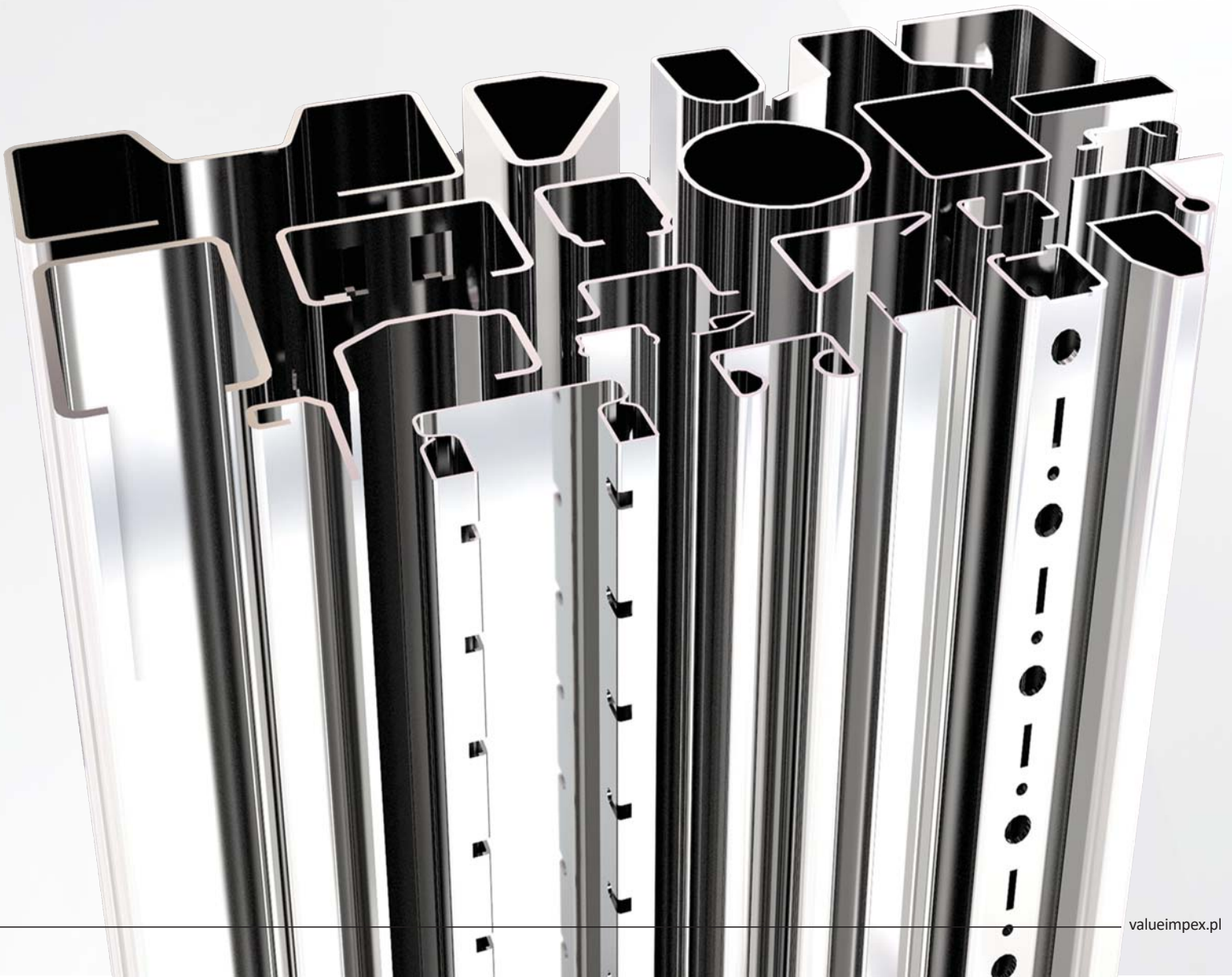


Magnelis® self-healing metallic coated steel

---

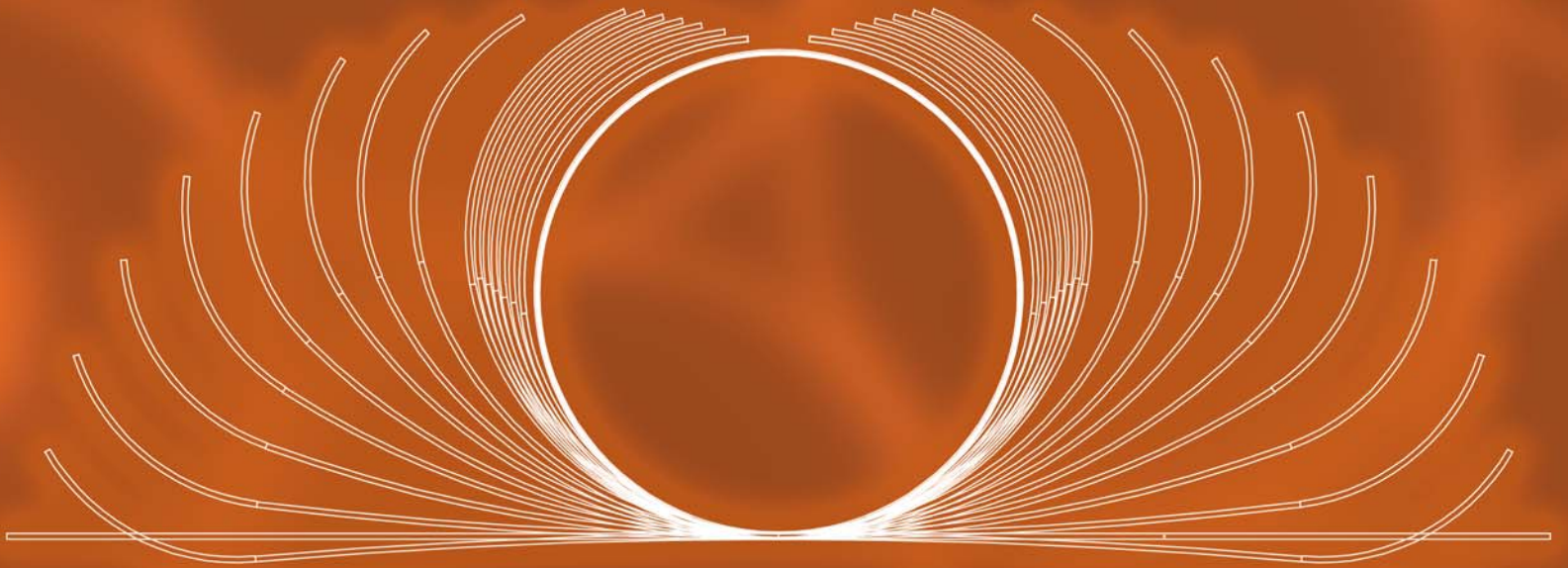
**vi** VALUEIMPEX

ArcelorMittal



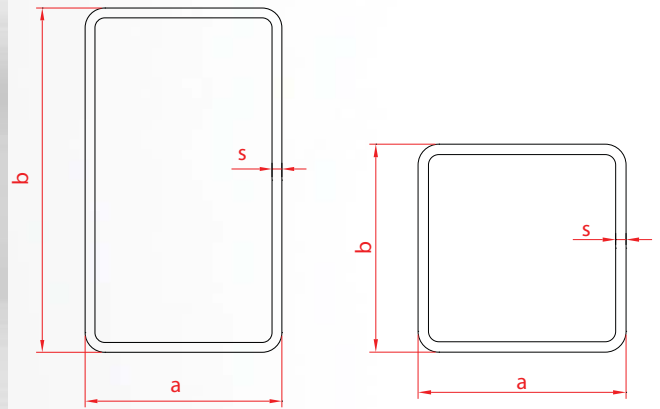
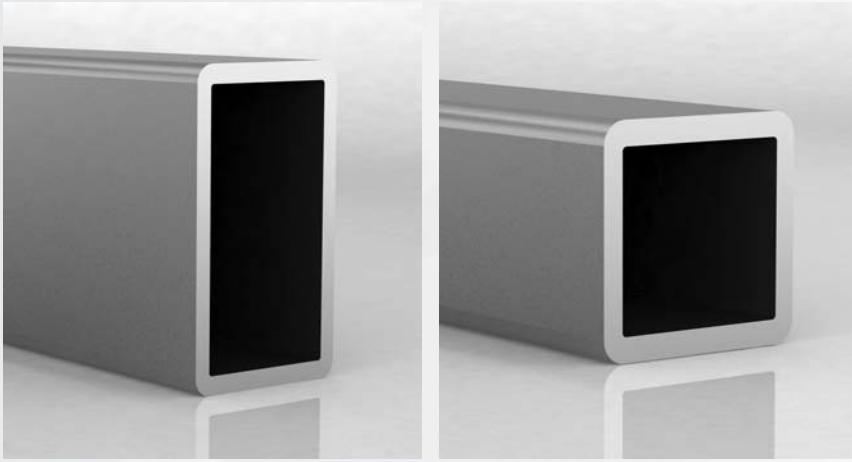
Magnelis®





## STANDARD TUBES AND PROFILES

# RECTANGULAR & SQUARE PROFILES



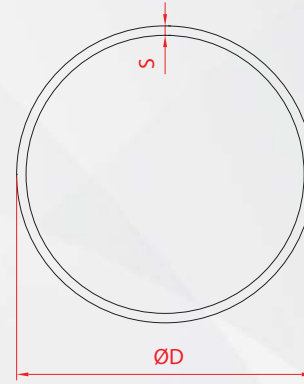
DIMENSIONS			(S) THICKNESS (mm)														
Out Diameter			0,50	0,60	0,70	0,80	0,90	1,00	1,20	1,50	2,00	2,50	3,00	4,00	5,00	6,00	8,00
a x b (mm)			Weight Kg/m														
10x10			0,161	0,193	0,225	0,257	0,290	0,322	0,386								
12x12			0,188	0,226	0,264	0,301	0,339	0,377	0,452	0,565							
12,7x12,7			0,196	0,236	0,275	0,314	0,353	0,393	0,471	0,589							
10x20	15x15		0,236	0,283	0,330	0,377	0,424	0,471	0,565	0,695							
10x30	15x25	20x20	0,310	0,372	0,434	0,496	0,558	0,620	0,744	0,918	1,225						
20x30	25x25	11x40	0,389	0,466	0,544	0,622	0,699	0,777	0,933	1,154	1,539						
20x40	30x30		0,467	0,560	0,654	0,747	0,841	0,934	1,121	1,389	1,853						
25x40					0,709	0,810	0,911	1,013	1,215	1,507	2,010						
30x40	35x35				0,764	0,873	0,982	1,091	1,300	1,625	2,167	2,689	3,226				
30x50	40x40				0,868	0,992	1,116	1,225	1,470	1,825	2,434	3,022	3,627	4,804			
30x60	40x50	45x45			0,967	1,105	1,243	1,382	1,658	2,061	2,748	3,415	4,098	5,432			
40x60	50x50	30x70			1,077	1,231	1,385	1,539	1,846	2,296	3,062	3,807	4,569	6,060			
40x80	50x70	60x60			1,297	1,482	1,667	1,853	2,223	2,767	3,690	4,592	5,511	7,316			
60x80	70x70				1,517	1,733	1,950	2,167	2,600	3,238	4,318	5,377	6,453	8,572			
50x100										3,462	4,616	5,770	6,900	9,200			
60x100	80x80									3,709	4,946	6,182	7,395	9,828			
60x120										5,526	6,888	8,243	10,990				
80x120	100x100								4,628	6,154	7,693	9,208	12,246	15,268	18,275	24,241	
80x140	110x110									6,814	8,517	10,197	13,565	16,917	20,253	26,941	
120x120	80x160									7,458	9,322	11,163	14,852	18,526	22,184	29,453	
100x150										7,756	9,695	11,610	15,449	19,272	23,079	30,646	
150x150	100x200									9,326	11,657	13,965	18,589	23,197	27,789	36,926	

Please contact us for your orders except for the mentioned measures above.





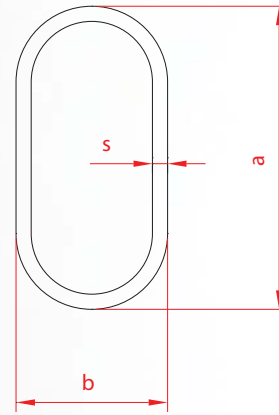
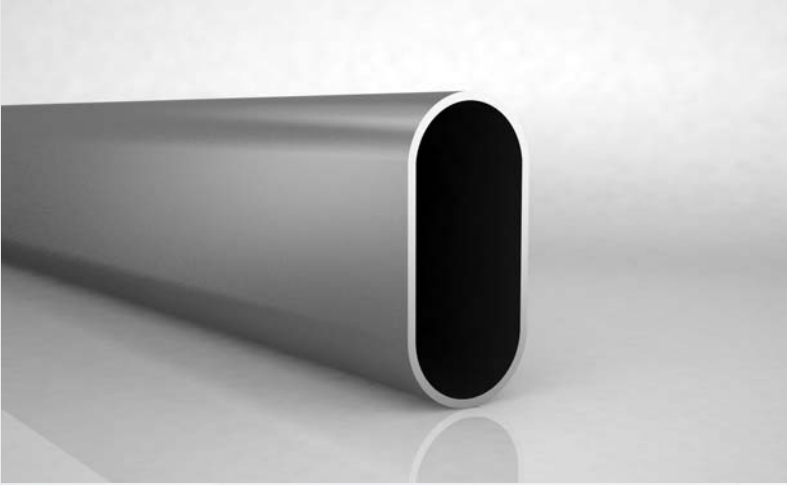
## TUBE PROFILES



DIMENSIONS	(S) THICKNESS (mm)															
Out Diameter	0,50	0,60	0,70	0,80	0,90	1,00	1,20	1,50	2,00	2,50	3,00	3,50	4,00	5,00	6,00	8,00
d (mm)	Weight Kg/m															
10	0,126	0,151	0,176	0,201	0,226	0,251										
12	0,149	0,179	0,209	0,239	0,268	0,298										
13	0,161	0,193	0,225	0,257	0,290	0,322	0,377									
14	0,173	0,207	0,242	0,276	0,311	0,345	0,405	0,506								
16	0,196	0,236	0,275	0,314	0,353	0,393	0,462	0,565	0,754							
17	0,208	0,250	0,291	0,333	0,374	0,416	0,490	0,601	0,785							
18	0,224	0,268	0,313	0,358	0,403	0,447	0,528	0,648	0,848							
20	0,247	0,297	0,346	0,396	0,445	0,495	0,584	0,730	0,958							
21	0,259	0,311	0,363	0,414	0,466	0,518	0,612	0,742	0,989							
22	0,271	0,325	0,379	0,433	0,487	0,542	0,650	0,801	1,068							
23,5	0,290	0,349	0,407	0,465	0,523	0,581	0,697	0,860	1,146							
25	0,310	0,372	0,434	0,496	0,558	0,612	0,735	0,918	1,225							
27	0,330	0,396	0,462	0,528	0,593	0,659	0,791	0,977	1,303							
28	0,345	0,414	0,484	0,553	0,622	0,691	0,829	1,024	1,366							
28,6	0,353	0,424	0,495	0,565	0,636	0,707	0,838	1,036	1,382							
30	0,369	0,443	0,517	0,590	0,664	0,738	0,885	1,095	1,460							
32	0,389	0,466	0,544	0,622	0,699	0,769	0,923	1,154	1,539							
34	0,396	0,476	0,555	0,634	0,714	0,793	0,942	1,178	1,570							
35	0,420	0,504	0,588	0,672	0,756	0,840	1,008	1,248	1,664							
38	0,467	0,560	0,654	0,747	0,841	0,934	1,112	1,389	1,853							
40		0,593	0,692	0,791	0,890	0,981	1,178	1,460	1,915							
42				0,816	0,918	1,021	1,215	1,507	2,010							
45				0,873	0,982	1,091	1,309	1,625	2,167							
48				0,942	1,060	1,178	1,413	1,743	2,324	2,905	3,462					
51					1,102	1,217	1,451	1,813	2,418	3,022	3,603					
54						1,303	1,554	1,943	2,575	3,219	3,839					
57						1,397	1,677	2,096	2,779	3,454	4,121					
60						1,460	1,752	2,190	2,920	3,631	4,357					
63								2,296	3,062	3,807	4,545					
70								2,543	3,391	4,219	5,040	5,880	6,688			
76									3,690	4,612	5,511	6,402	7,285			
82									4,004	5,004	5,982	6,979	7,944			
89									4,318	5,397	6,453	7,528	8,572			
94									4,632	5,789	6,924	8,078	9,200			
102									4,946	6,182	7,395	8,627	9,828			
114									5,574	6,967	8,337	9,726	11,084			
127									6,202	7,752	9,279	10,825	12,340	15,386	18,416	24,429
139									6,814	8,517	10,197	11,897	13,565	16,917	20,253	26,878
152									7,442	9,302	11,139	12,996	14,821	18,487	22,137	29,390
159									7,772	9,714	11,634	13,573	15,480	19,311	23,126	30,709
168									8,211	10,264	12,293	14,342	16,359	20,410	24,445	32,468
191									9,342	11,677	13,989	16,320	18,620	23,236	27,836	37,052

Please contact us for your orders except for the mentioned measures above.

## OVAL & ELIPSE PROFILES

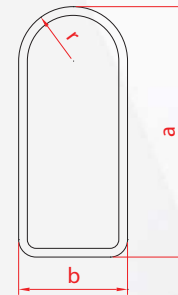


DIMENSIONS	[S] THICKNESS (mm)						
Out Diameter	0,80	0,90	1,00	1,20	1,50	2,00	3,00
a x b (mm)	Weight Kg/m						
14x8	0,239	0,268	0,298	0,358	0,447		
16x8	0,257	0,290	0,322	0,386	0,483		
20x10	0,314	0,353	0,393	0,471	0,577	0,769	
25x15	0,414	0,466	0,518	0,622	0,777	1,005	
30x10	0,433	0,487	0,542	0,650	0,812	1,036	
30x15	0,490	0,551	0,612	0,735	0,918	1,225	
30x70		1,258	1,397	1,677	2,096	2,795	4,192
35x15	0,553	0,622	0,691	0,829	1,036	1,382	
35x20	0,590	0,664	0,738	0,885	1,107	1,476	
40x20	0,653	0,735	0,816	0,980	1,213	1,601	

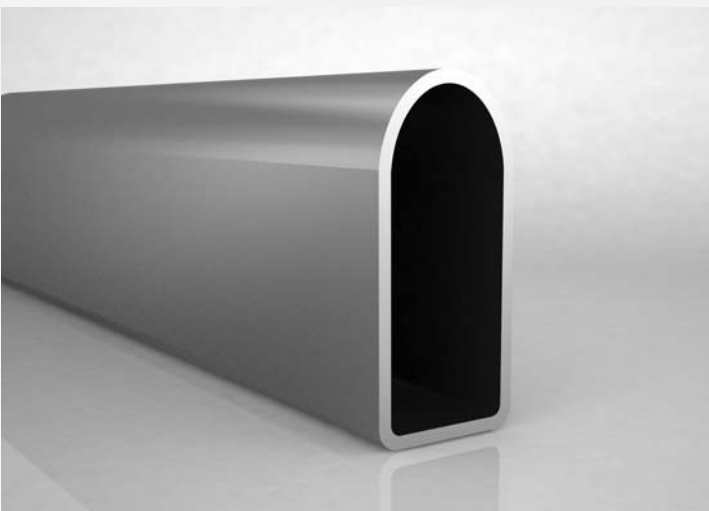
Please contact us for your orders except for the mentioned measures above.

DIMENSIONS	[S] THICKNESS (mm)						
Out Diameter	0,80	0,90	1,00	1,20	1,50	2,00	3,00
a x b (mm)	Weight Kg/m						
45x15	0,685	0,770	0,856	1,027	1,272	1,680	
48x20	0,747	0,841	0,934	1,112	1,389	1,853	
50x20	0,772	0,869	0,966	1,159	1,448	1,915	
50x25		0,904	1,005	1,206	1,507	2,010	2,991
50x30		0,904	1,005	1,206	1,507	2,010	2,991
55x25		0,975	1,083	1,300	1,625	2,167	3,226
60x20		0,975	1,083	1,300	1,625	2,167	
60x30			1,209	1,451	1,813	2,418	3,603
63x50			1,413	1,696	2,120	2,826	4,215
68x50			1,515	1,818	2,273	3,030	4,522
80x25				1,752	2,190	2,920	4,380

Please contact us for your orders except for the mentioned measures above.



## D PROFILES



DIMENSIONS	[S] THICKNESS (mm)							
Out Diameter	0,60	0,70	0,80	0,90	1,00	1,20	1,50	2,00
a x b (mm)	Weight Kg/m							
30x20			0,576	0,646	0,715	0,852	1,050	1,250
30x15			0,528	0,593	0,659	0,791	0,989	1,287
30x40			0,754	0,848	0,942	1,130	1,413	1,884
35x20			0,615	0,69	0,764	0,912	1,120	1,340
40x20			0,694	0,779	0,863	1,030	1,270	1,520
38x26			0,747	0,841	0,934	1,112	1,389	1,853
40x30					0,962	1,148	1,425	1,696
50x25					1,083	1,300	1,625	2,167
60x50					1,510	1,812	2,265	3,020

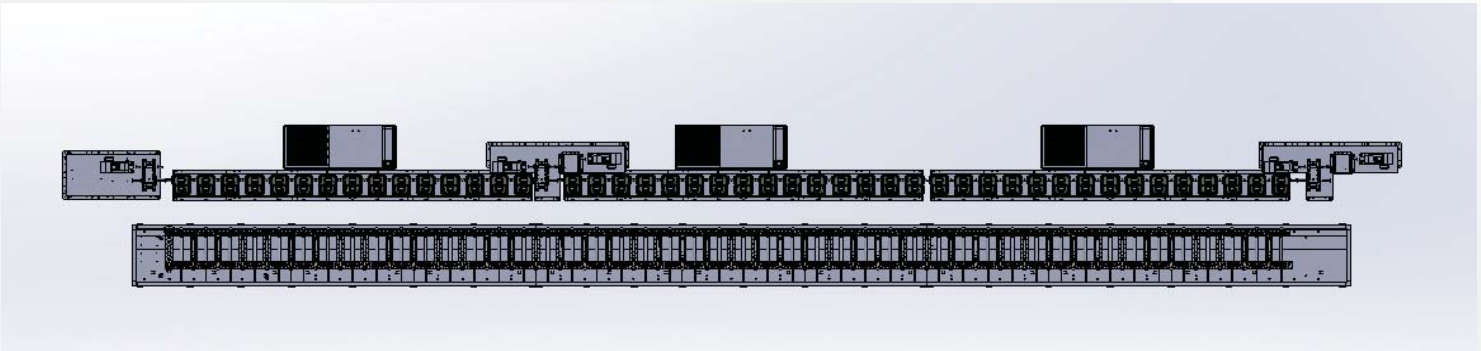
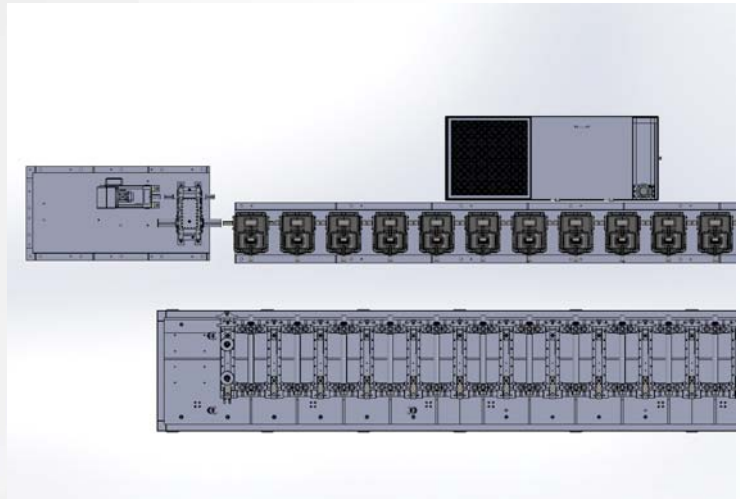
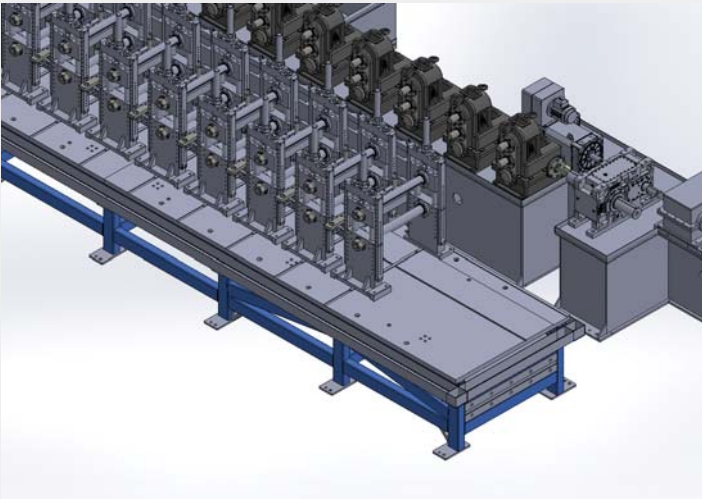
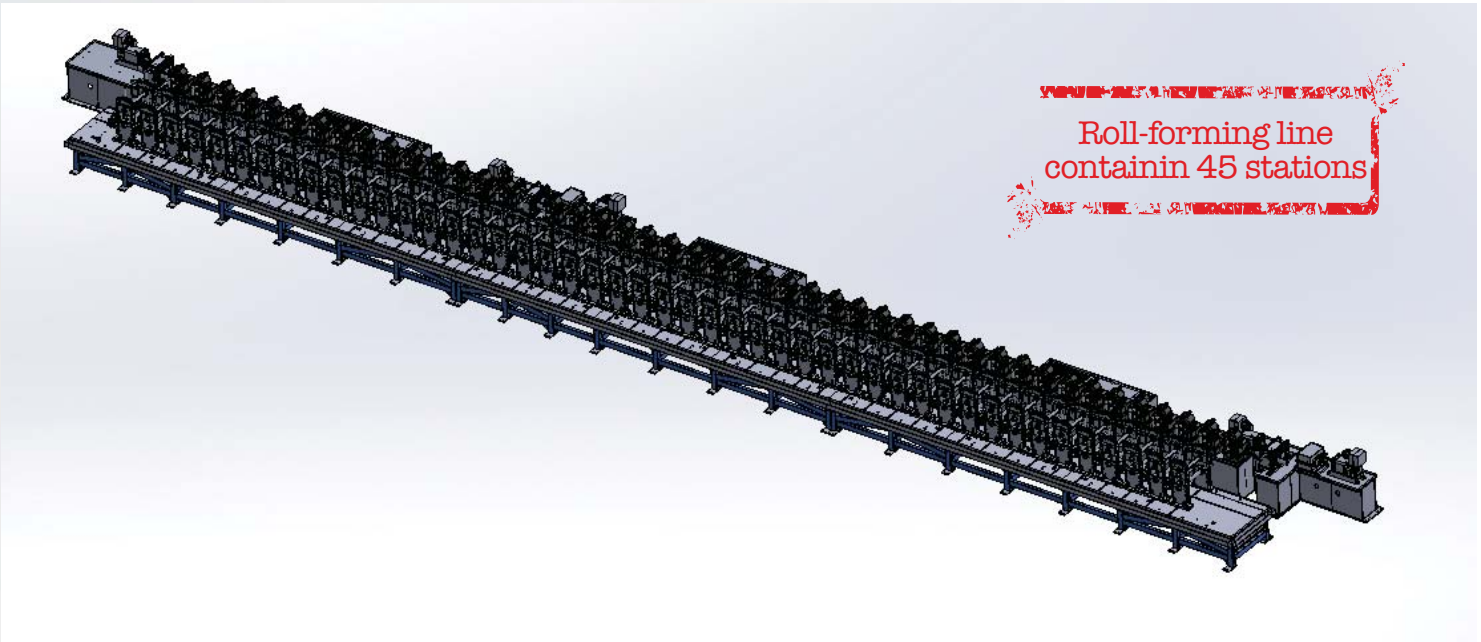
Please contact us for your orders except for the mentioned measures above.



PACKING









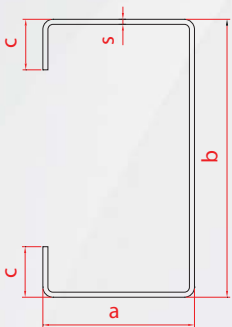
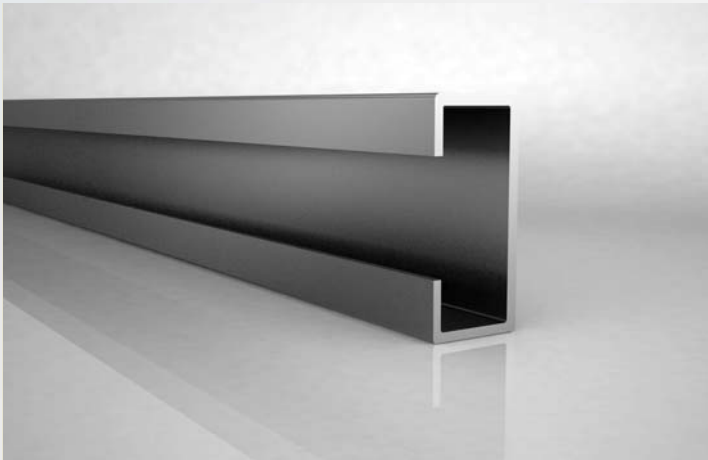


## SPECIAL PROFILES

- C & U profiles
- Tubes and profiles in special cross-section,
- Air conditioning plant's construction profiles
- Profiles for furniture Industry
- Shelving profiles
- Conveyor profiles
- Roller blinds & awnings' profiles
- Roller shutter profiles (octagonal shaped)

The design and production of our molds and fixtures that are using in every stage of the production are produced by our own experienced technical team. On special profiles punching, bending, edge reducing, edging, end cutting and similar requested applications can be performed to have them as semi and finished product.

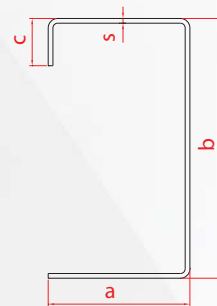
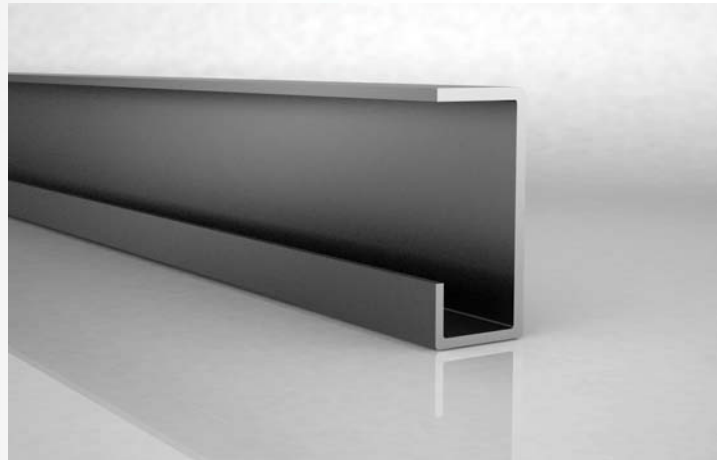
## C PROFILES



Dimensions	A (mm)	B (mm)	C (mm)	S (mm)
Min.	5	10	10	0,5
Max.	245	500	150	8

All types of C profiles which their minimum and maximum measures are mentioned above are manufactured by our company.

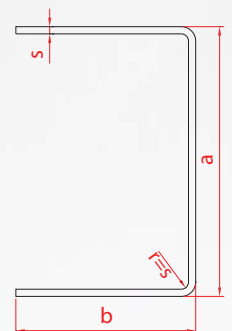
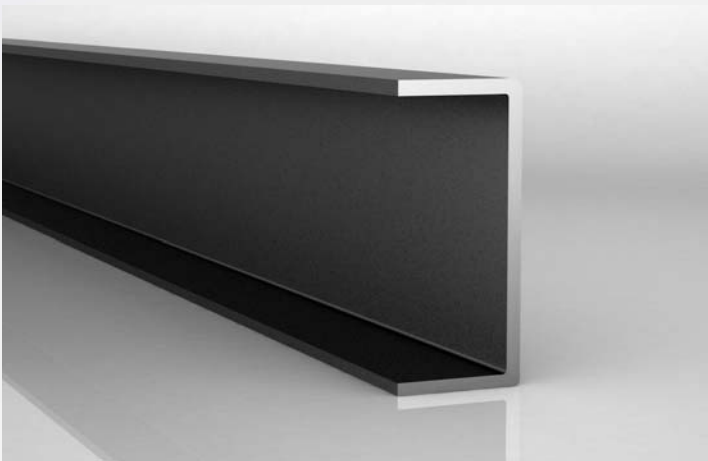
## C PROFILES



Dimensions	A (mm)	B (mm)	C (mm)	S (mm)
Min.	5	10	10	0,5
Max.	245	500	150	8

All types of C profiles which their minimum and maximum measures are mentioned above are manufactured by our company.

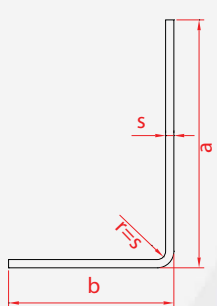
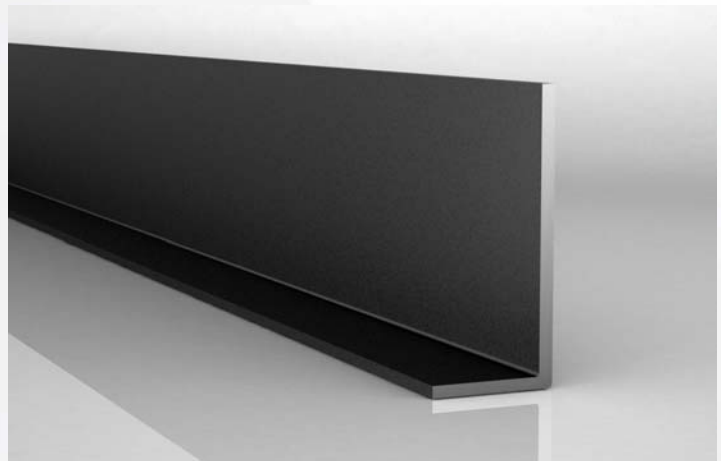
## U PROFILES



Dimensions	A (mm)	B (mm)	S (mm)
Min.	5	10	0,5
Max.	500	245	8

All types of U profiles which their minimum and maximum measures are mentioned above are manufactured by our company.

## L PROFILES

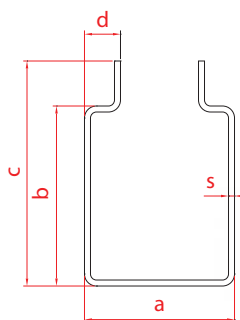


Dimensions	A (mm)	B (mm)	S (mm)
Min.	10	5	0,5
Max.	500	245	8

All types of L profiles which their minimum and maximum measures are mentioned above are manufactured by our company.



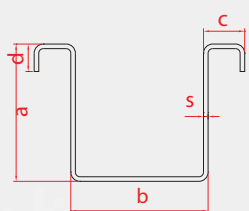
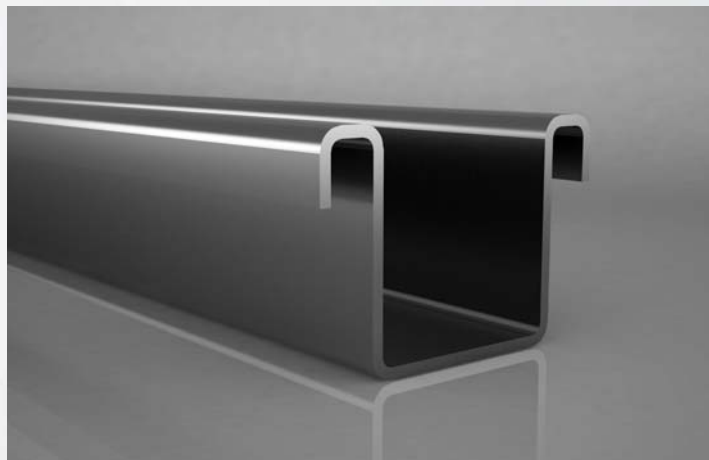
## STANDARD OPEN SHAPED PROFILES



Dimensions	A (mm)	B (mm)	C (mm)	D (mm)	S (mm)
Min.	30	30	55	8	0,5
Max.	400	230	245	150	8

All types of profiles which their minimum and maximum measures are mentioned above are manufactured by our company.

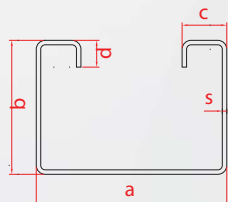
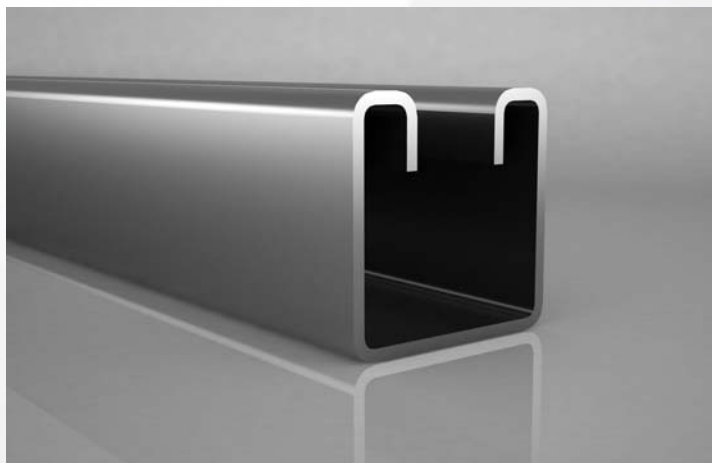
## STANDARD OPEN SHAPED PROFILES



Dimensions	A (mm)	B (mm)	C (mm)	D (mm)	S (mm)
Min.	20	20	10	5	0,5
Max.	400	245	100	50	8

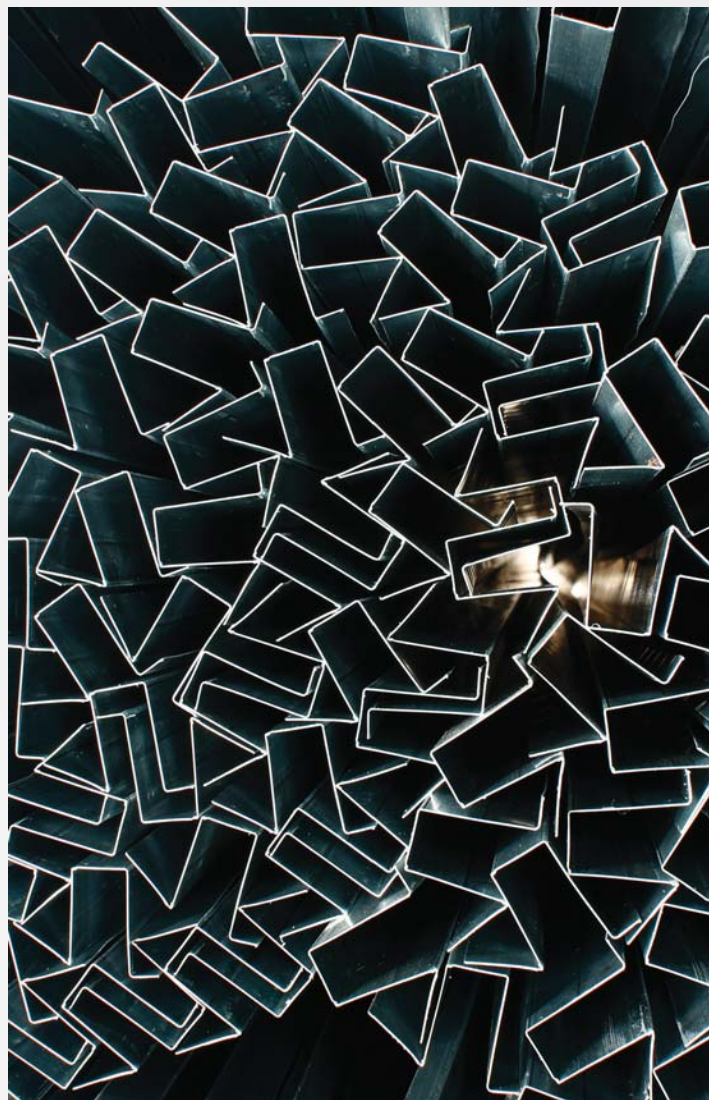
All types of profiles which their minimum and maximum measures are mentioned above are manufactured by our company.

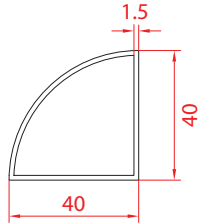
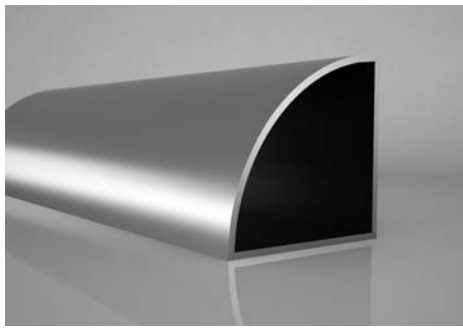
## STANDARD OPEN SHAPED PROFILES



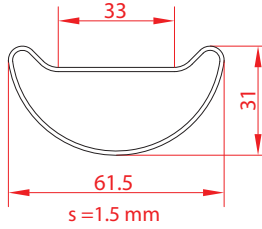
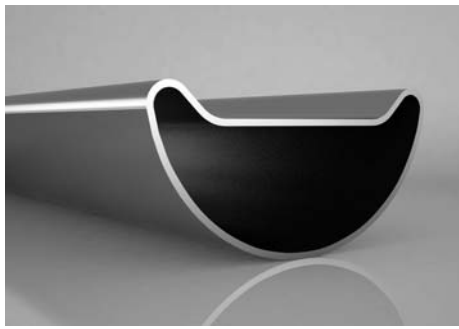
Dimensions	A (mm)	B (mm)	C (mm)	D (mm)	S (mm)
Min.	20	20	10	5	0,5
Max.	400	245	100	50	8

All types of profiles which their minimum and maximum measures are mentioned above are manufactured by our company.

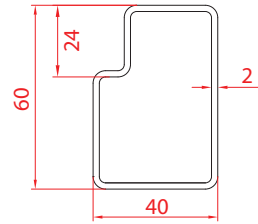
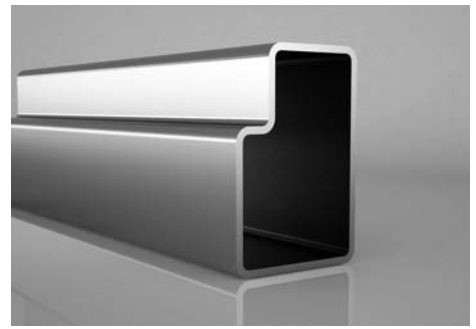




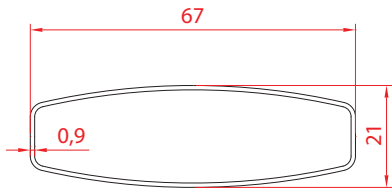
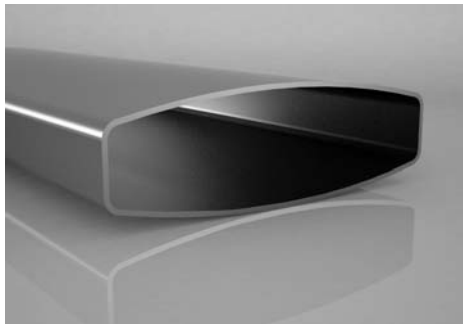
OZL-01



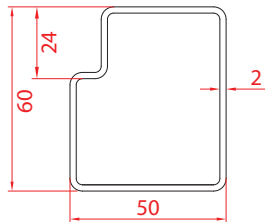
OZL-02



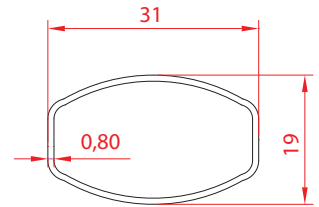
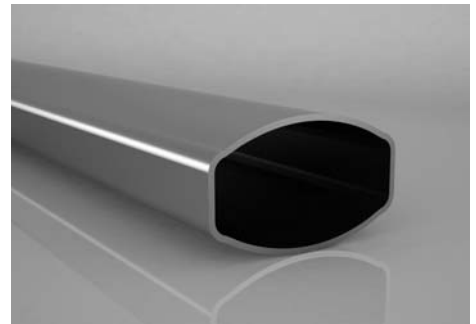
OZL-03



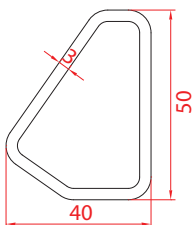
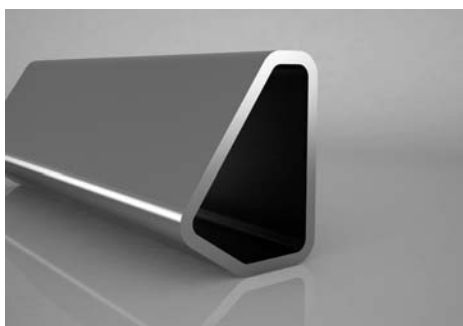
OZL-04



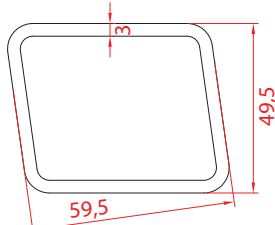
OZL-05



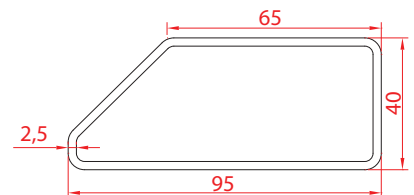
OZL-06



OZL-07

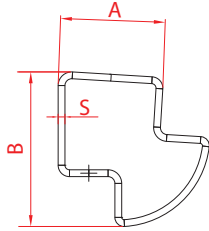
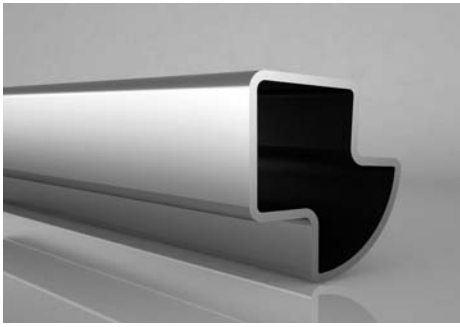


OZL-08

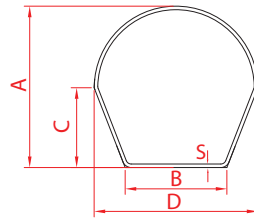
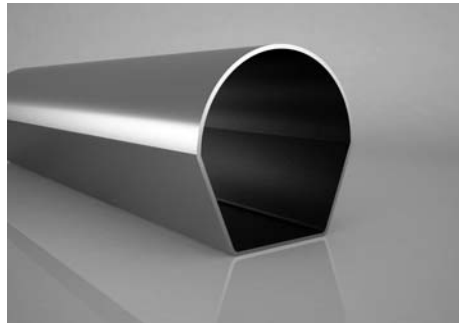


OZL-09

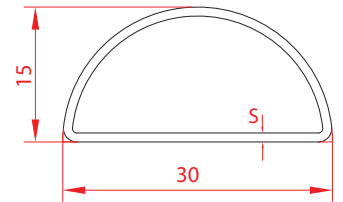
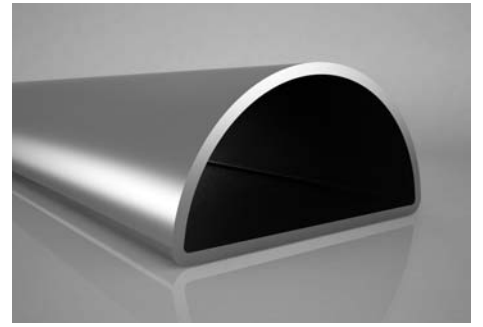




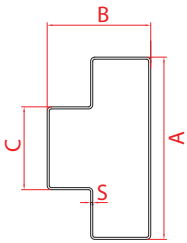
OZL-10



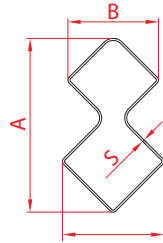
OZL-11



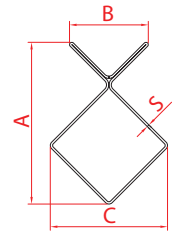
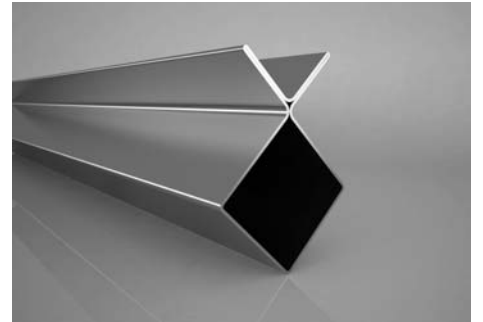
OZL-12



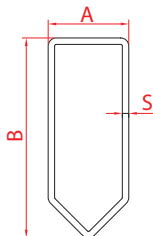
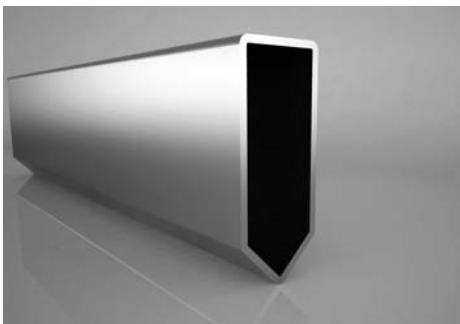
OZL-13



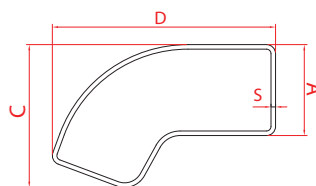
OZL-14



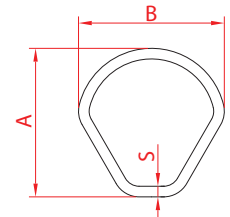
OZL-15



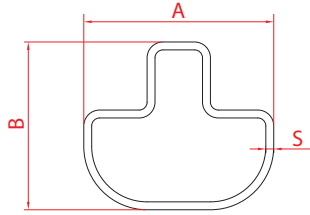
OZL-16



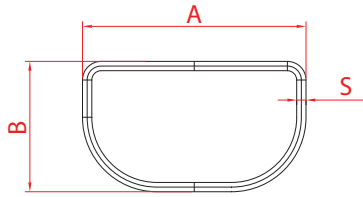
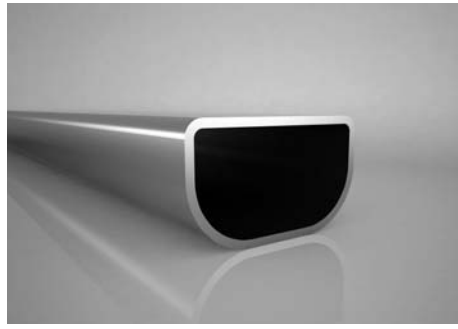
OZL-17



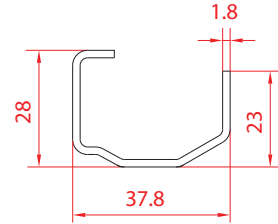
OZL-18



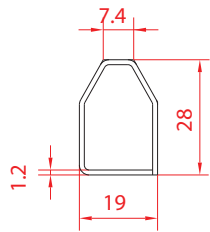
OZL-19



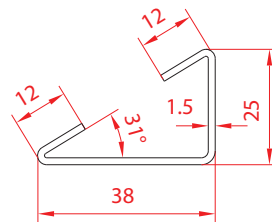
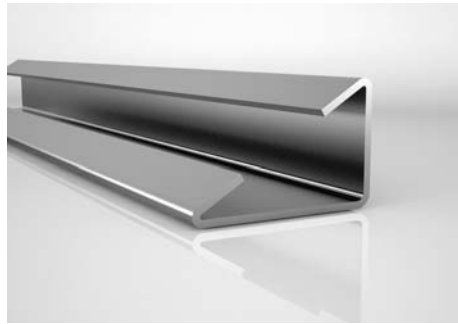
OZL-20



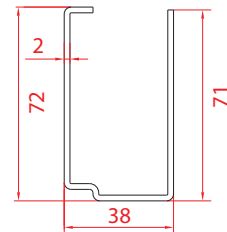
OZL-21



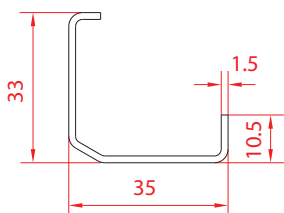
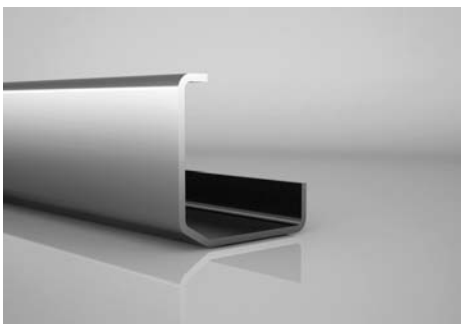
OZL-22



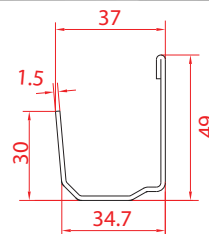
OZL-23



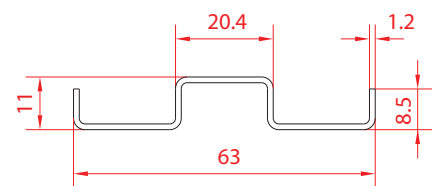
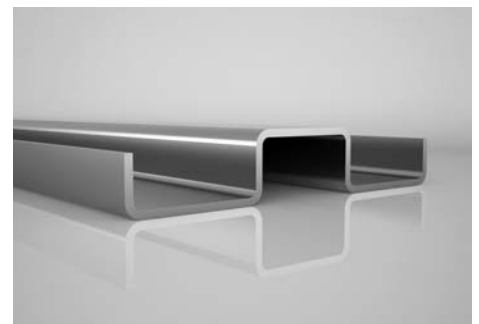
OZL-24



OZL-25

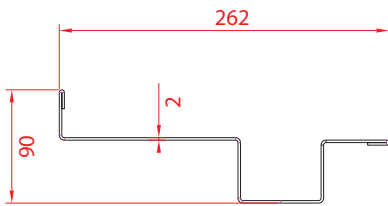
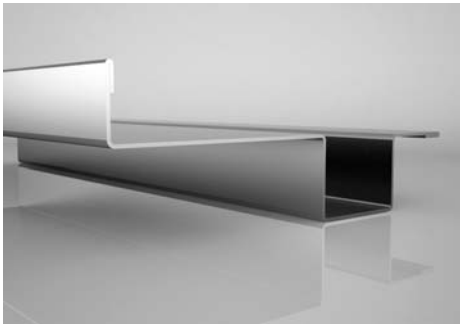


OZL-26

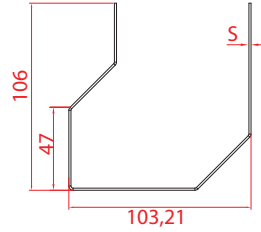
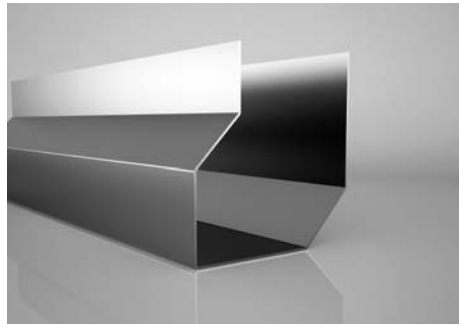


OZL-27

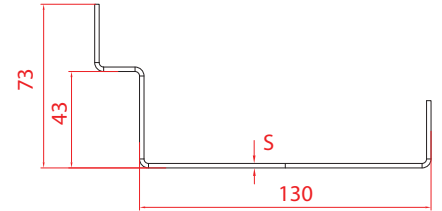
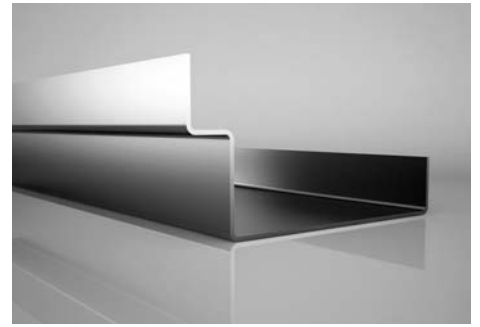




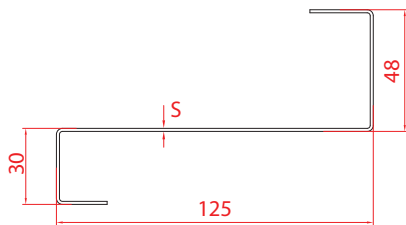
OZL-28



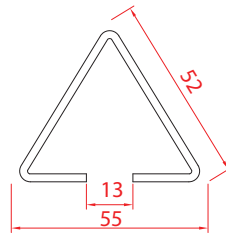
OZL-29



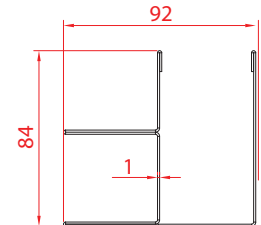
OZL-30



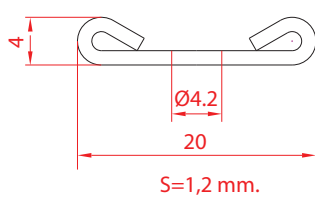
OZL-31



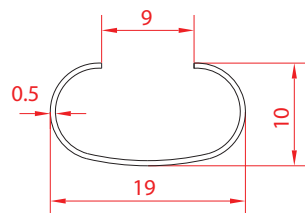
OZL-32



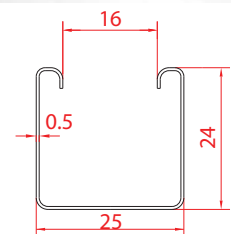
OZL-33



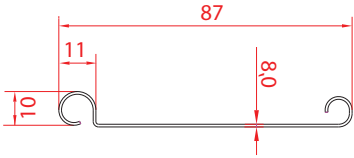
OZL-34



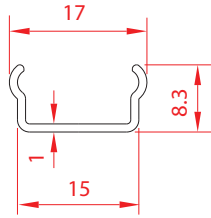
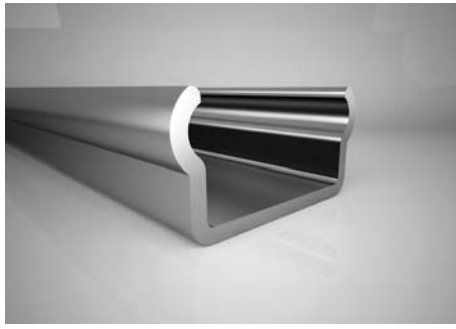
OZL-35



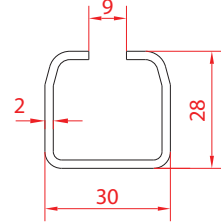
OZL-36



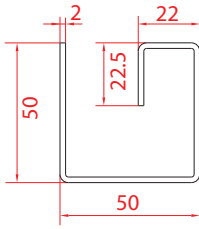
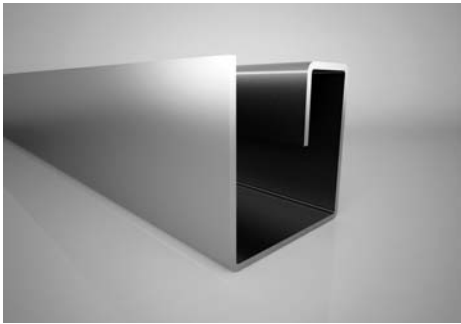
OZL-37



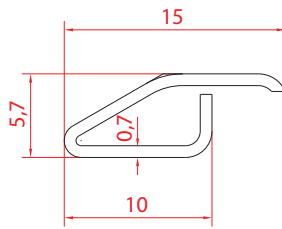
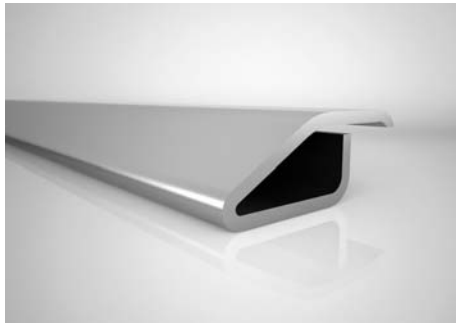
OZL-38



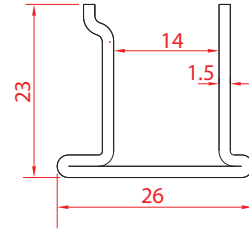
OZL-39



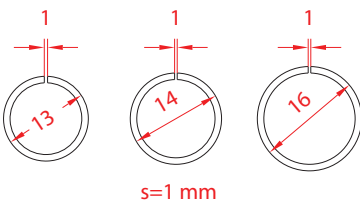
OZL-40



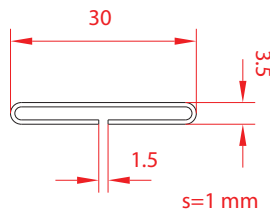
OZL-41



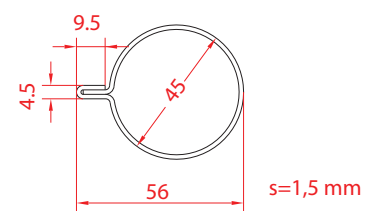
OZL-42



OZL-43

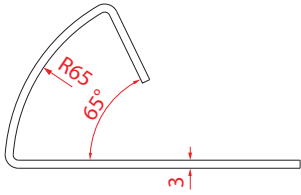
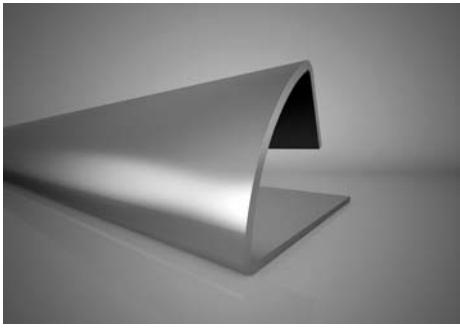


OZL-44

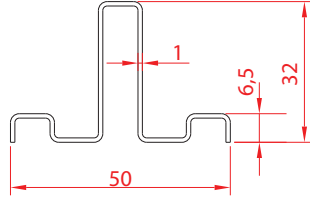
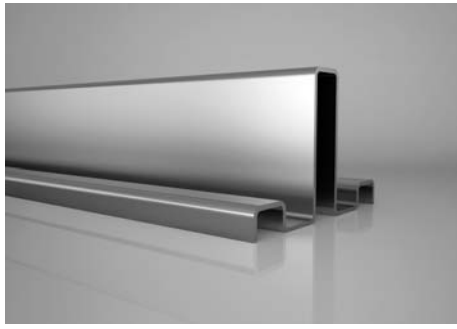


OZL-45

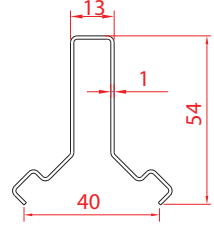




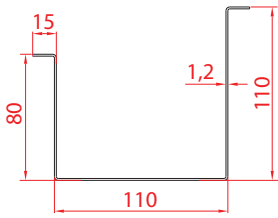
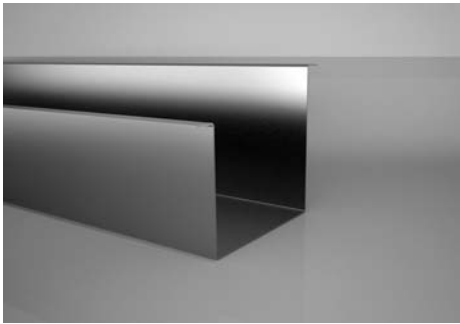
OZL-46



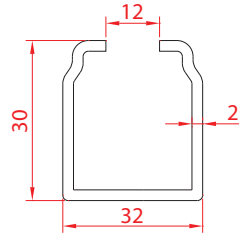
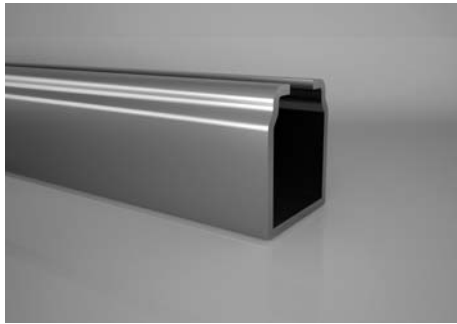
OZL-47



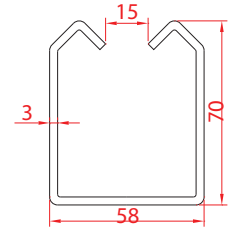
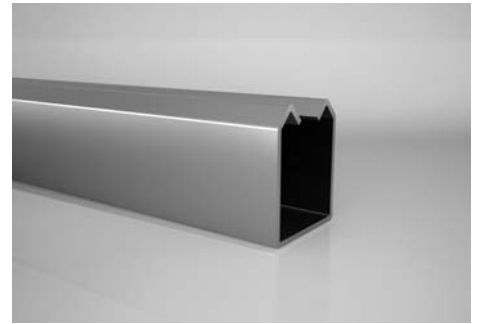
OZL-48



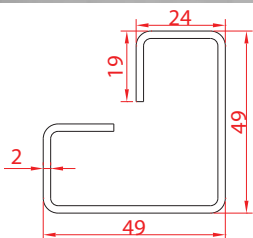
OZL-49



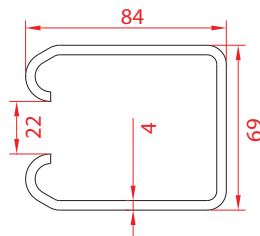
OZL-50



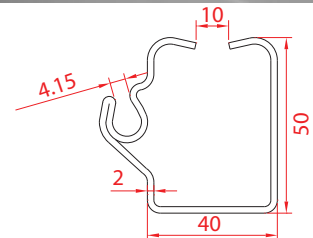
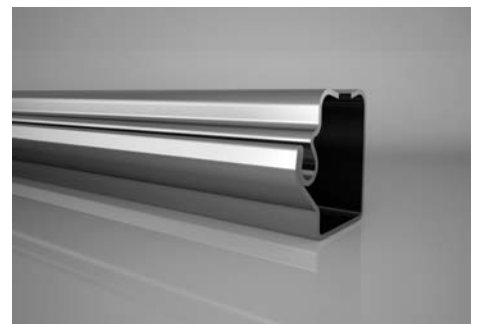
OZL-51



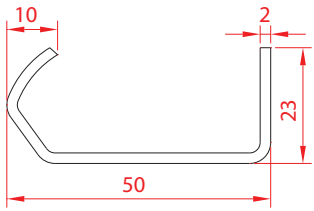
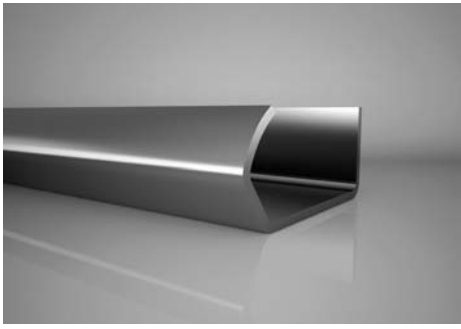
OZL-52



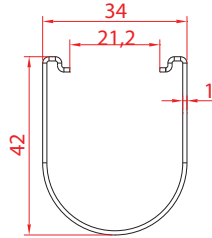
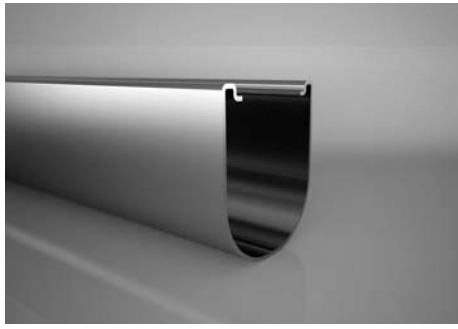
OZL-53



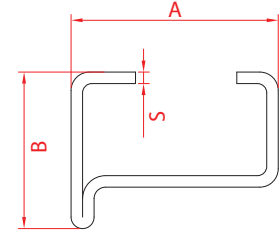
OZL-54



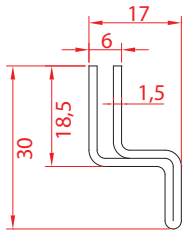
OZL-55



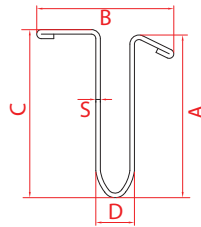
OZL-56



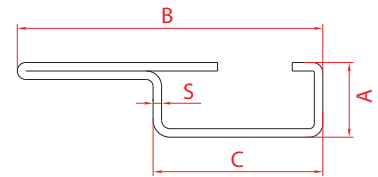
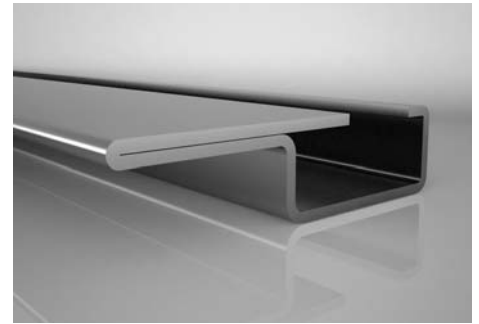
OZL-57



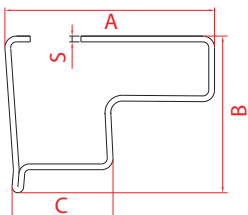
OZL-58



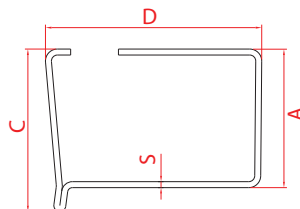
OZL-59



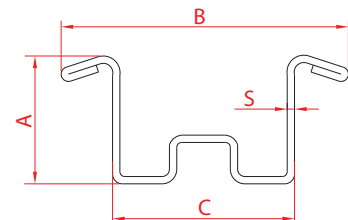
OZL-60



OZL-61

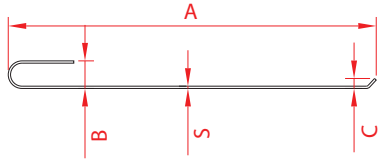
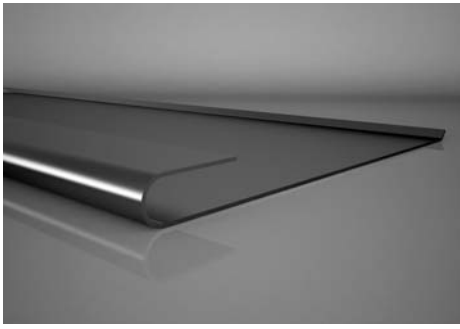


OZL-62

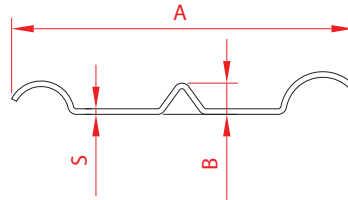
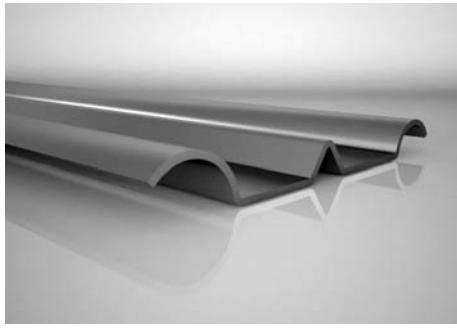


OZL-63

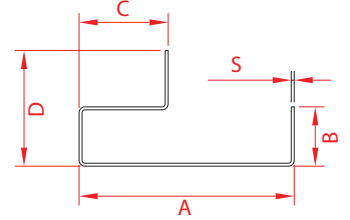
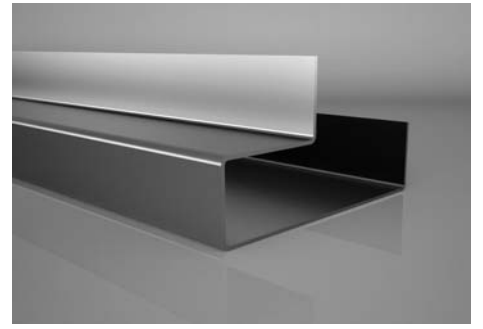




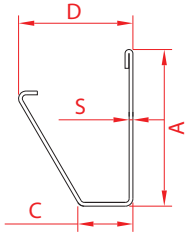
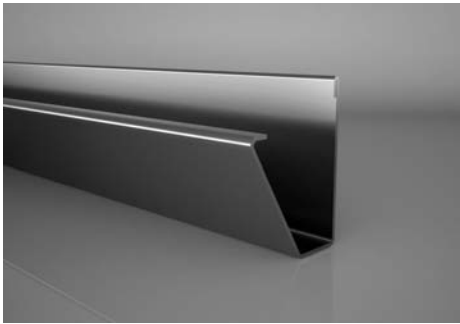
OZL-64



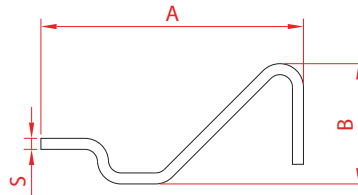
OZL-65



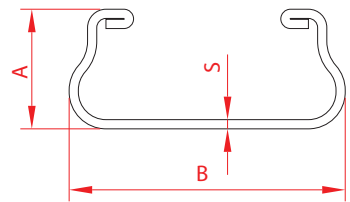
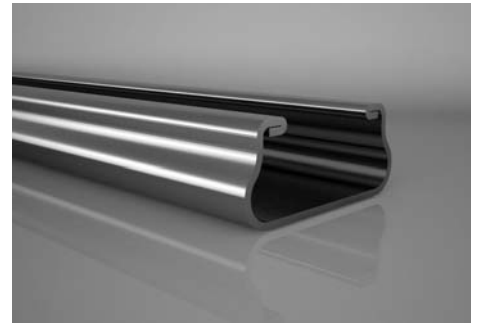
OZL-66



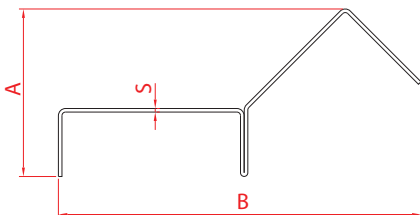
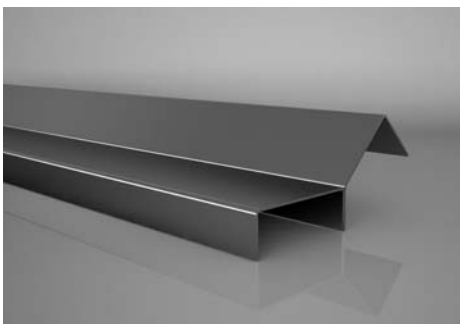
OZL-67



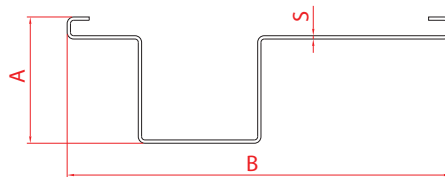
OZL-68



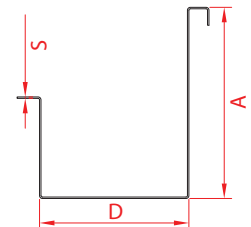
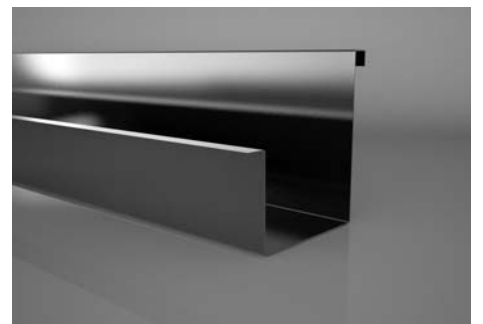
OZL-69



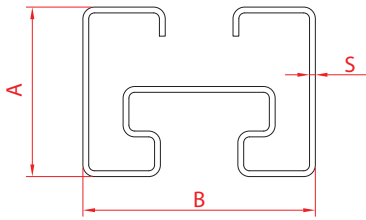
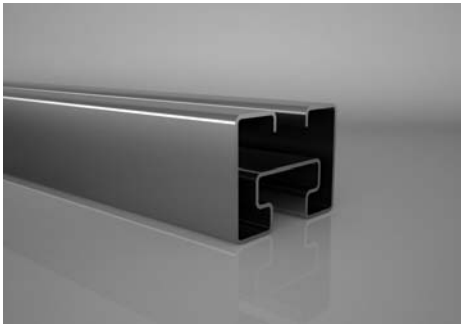
OZL-70



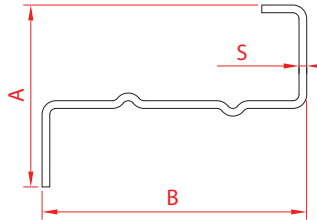
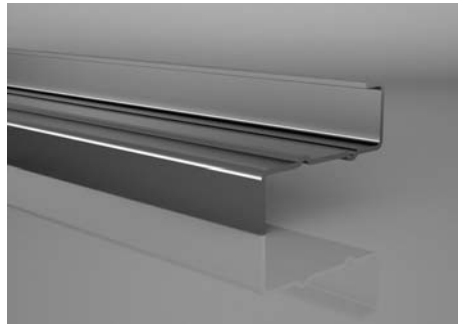
OZL-71



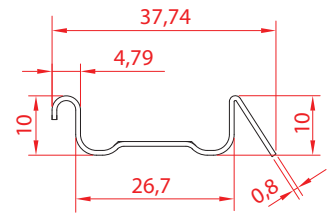
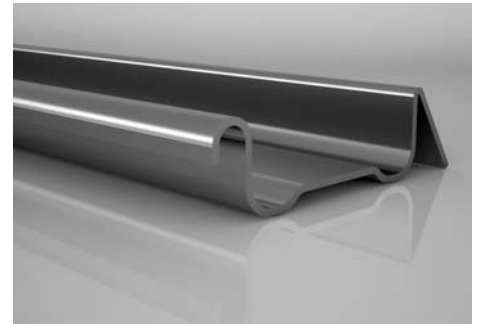
OZL-72



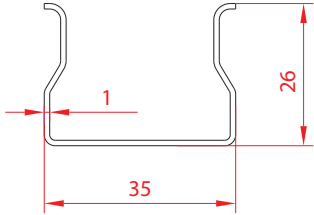
OZL-73



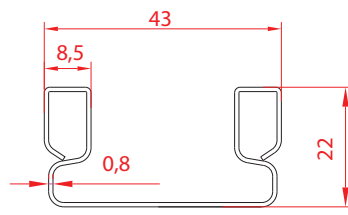
OZL-74



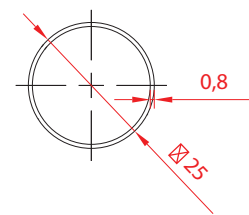
OZL-75



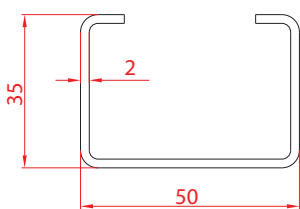
OZL-76



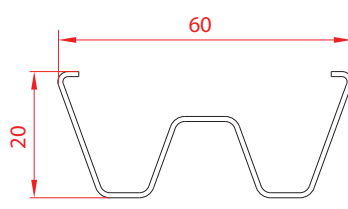
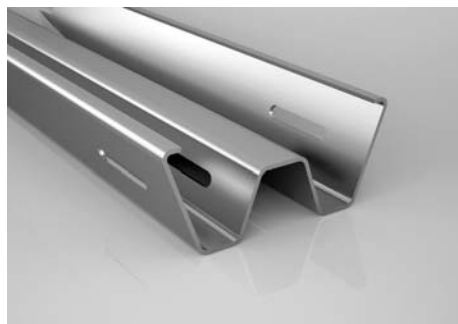
OZL-77



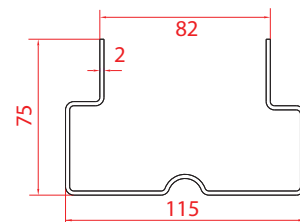
OZL-78



OZL-79

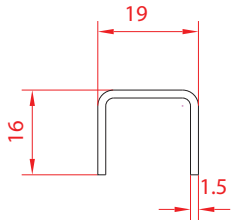
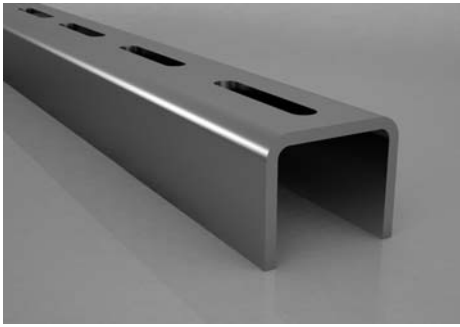


OZL-80

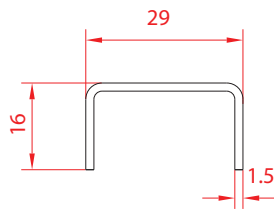


OZL-81

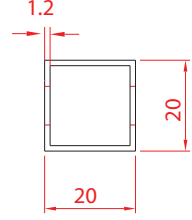
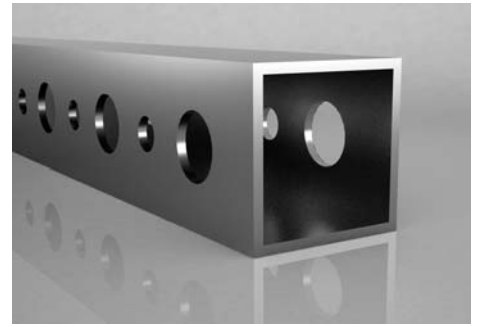




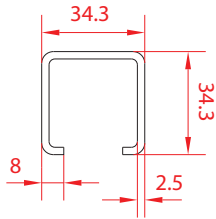
OZL-82



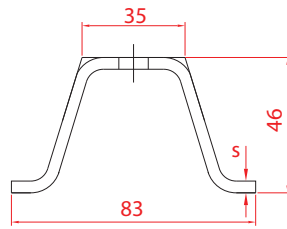
OZL-83



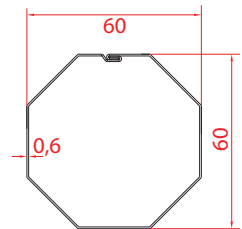
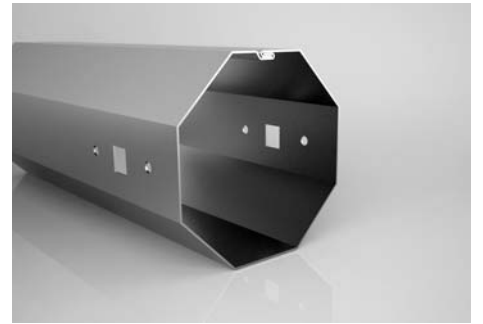
OZL-84



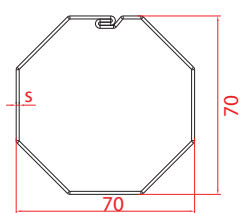
OZL-85



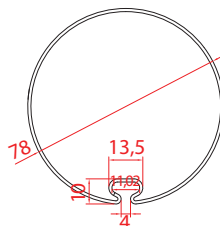
OZL-86



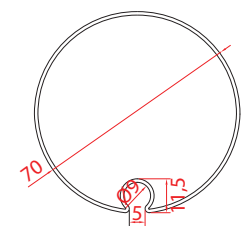
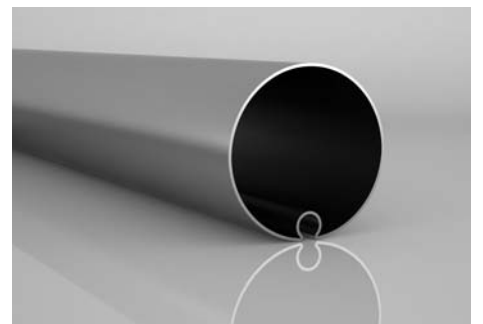
OZL-87



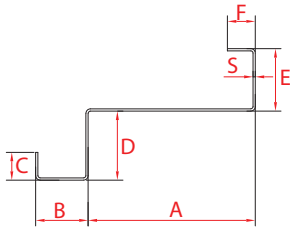
OZL-88



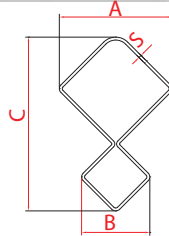
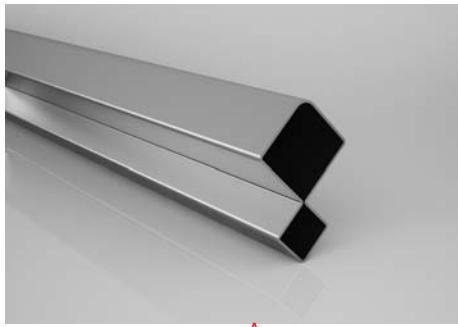
OZL-89



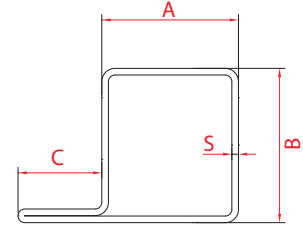
OZL-90



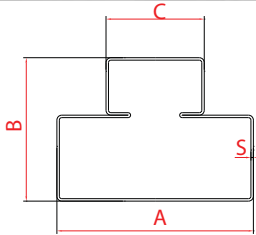
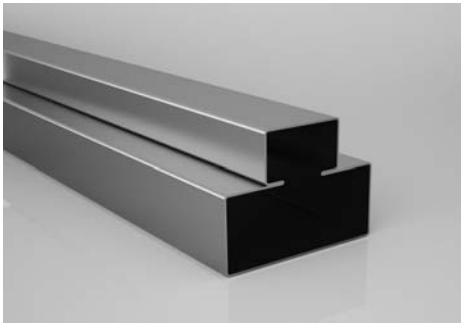
OZL-91



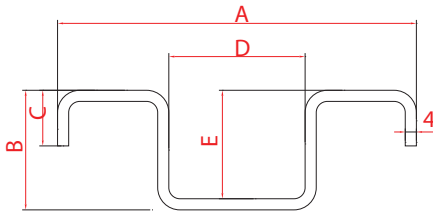
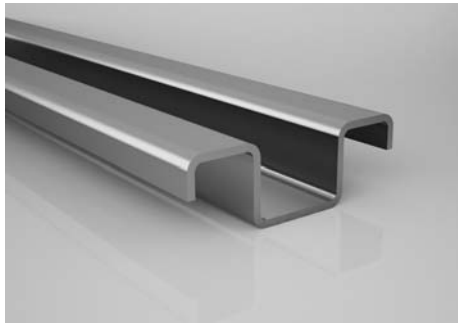
OZL-92



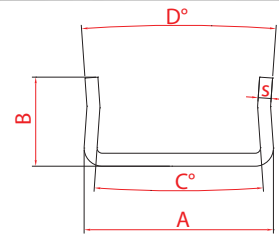
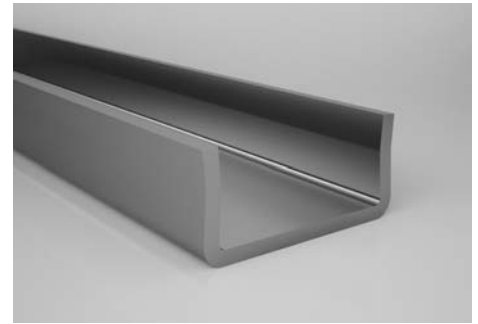
OZL-93



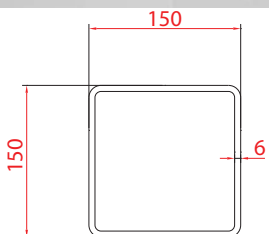
OZL-94



OZL-95



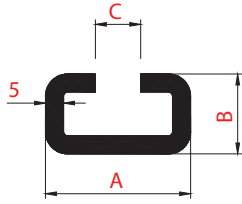
OZL-96



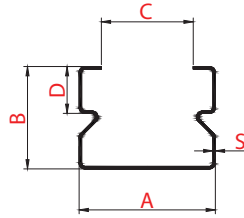
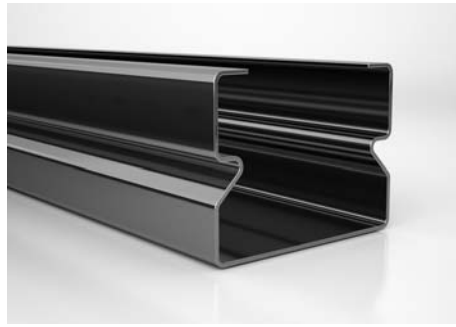
OZL-97



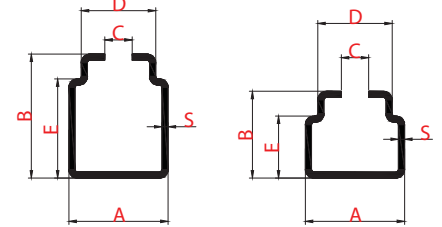




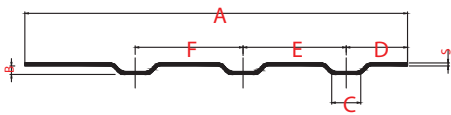
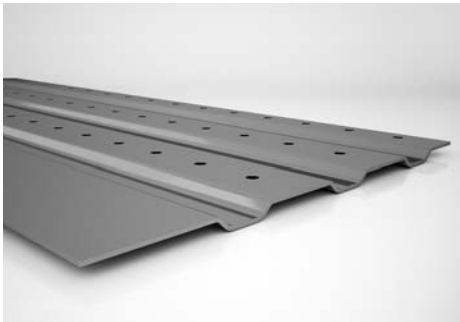
OZL-98



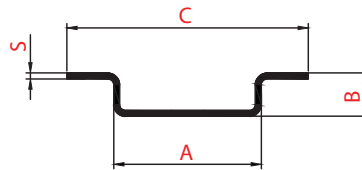
OZL-99



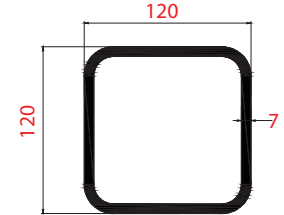
OZL-100



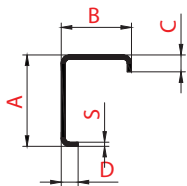
OZL-101



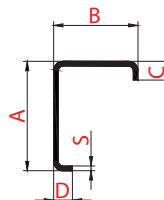
OZL-102



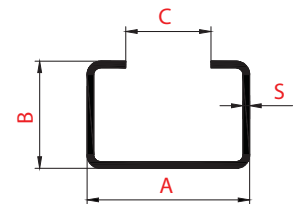
OZL-103



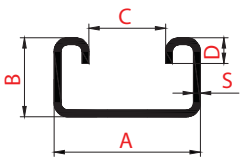
OZL-104



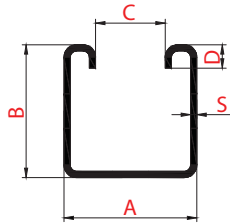
OZL-105



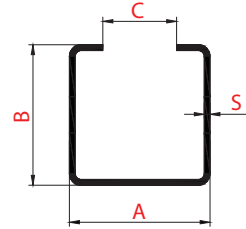
OZL-106



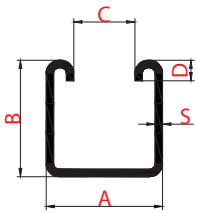
OZL-107



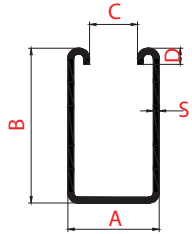
OZL-108



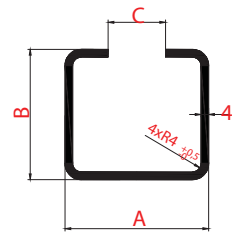
OZL-109



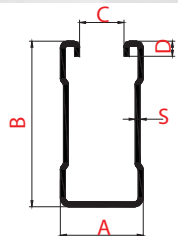
OZL-110



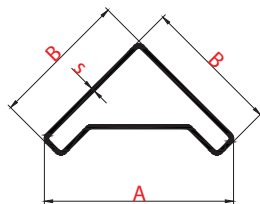
OZL-111



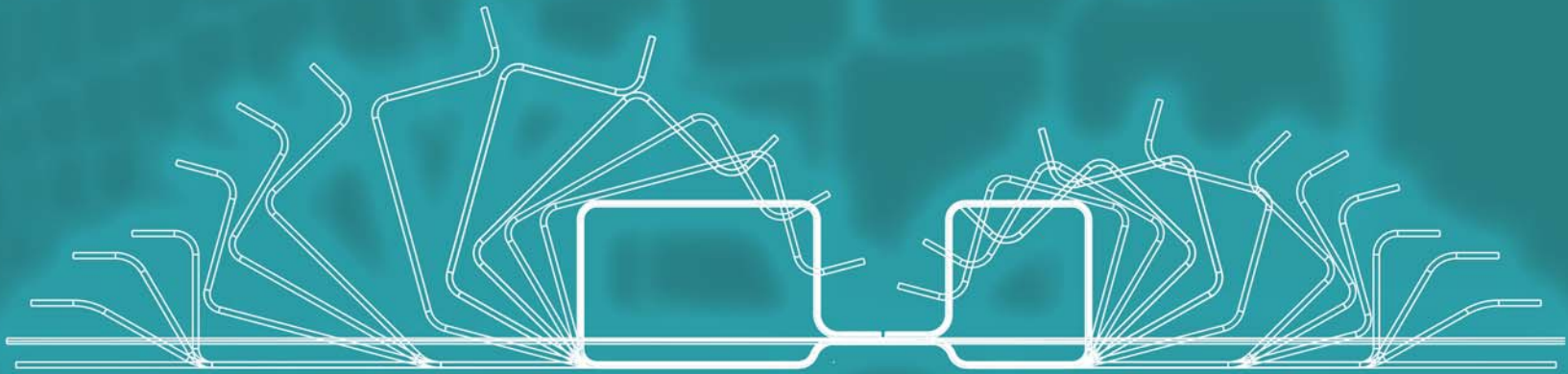
OZL-112



OZL-113



OZL-114

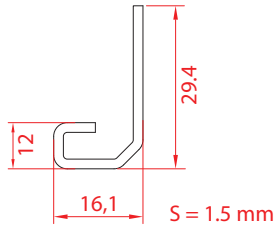
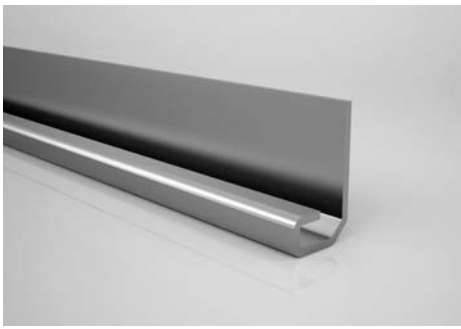


## AUTOMOTIVE PROFILES

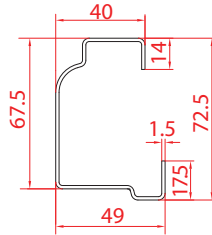
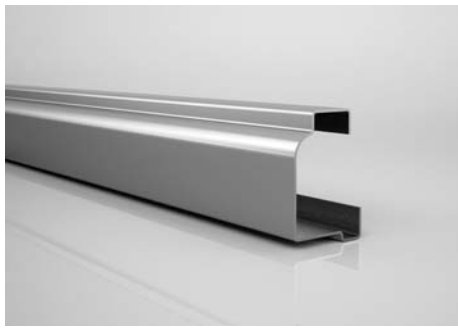
- Door window frames & window rails
- Glass running rail profile of doors
- Chassis profiles, chassis parts of trucks
- Front & rear bumper of cars
- Air filter cabins
- Sliding door rails
- Seat rails and frames
- Rain gutter
- Alusi exhaust pipe

The design and production of our molds and fixtures that are using in every stage of the production are produced by our own experienced technical team. On special profiles punching, bending, edge reducing, edging, end cutting and similar requested applications can be performed to have them as semi and finished product.

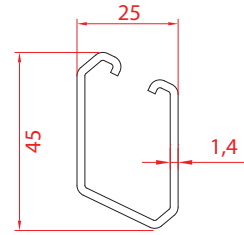




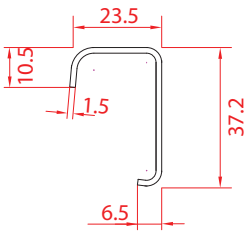
OTM-01



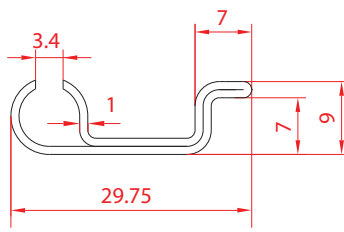
OTM-02



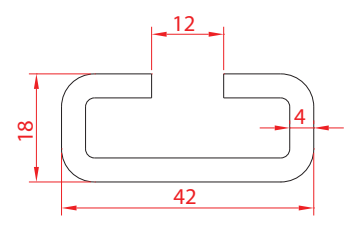
OTM-03



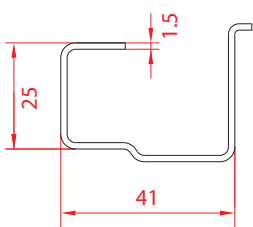
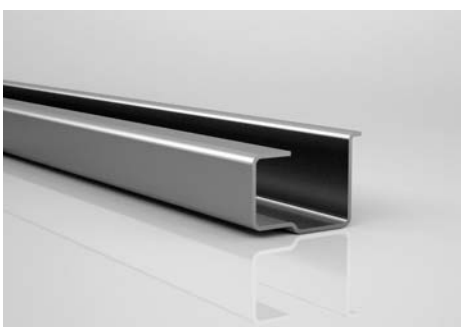
OTM-04



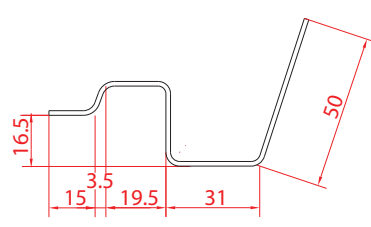
OTM-05



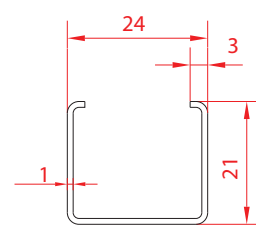
OTM-06



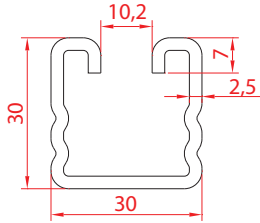
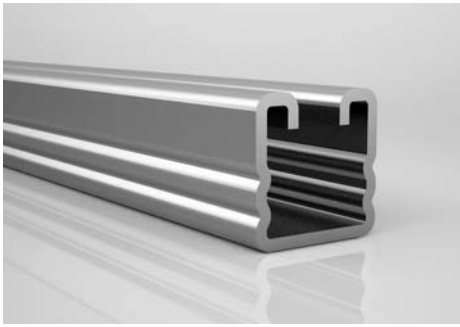
OTM-07



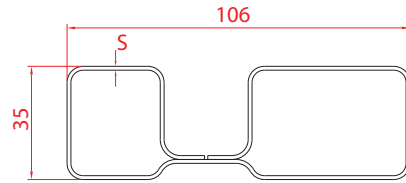
OTM-08



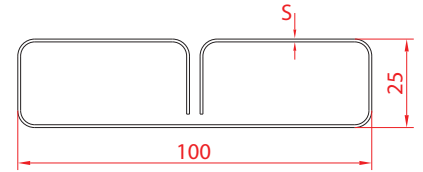
OTM-09



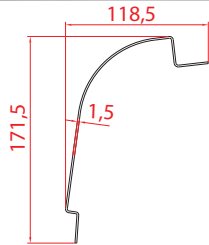
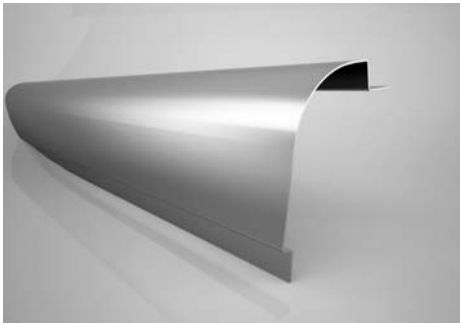
OTM-10



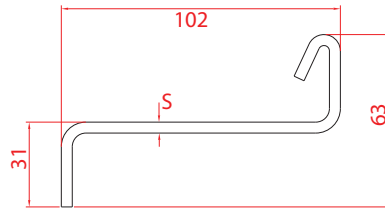
OTM-11



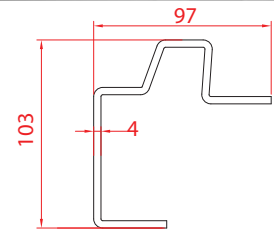
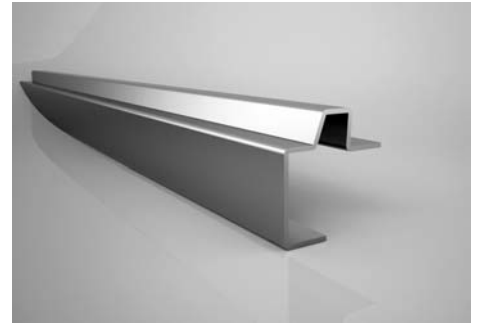
OTM-12



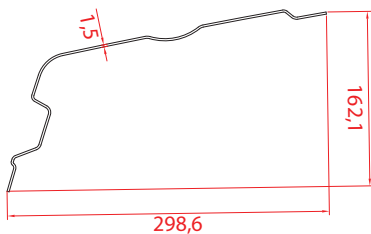
OTM-13



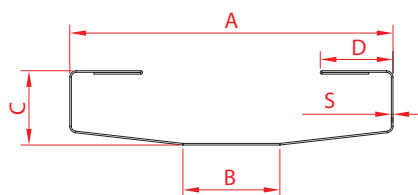
OTM-14



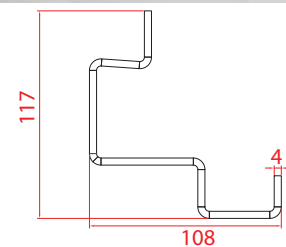
OTM-15



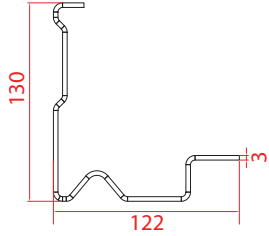
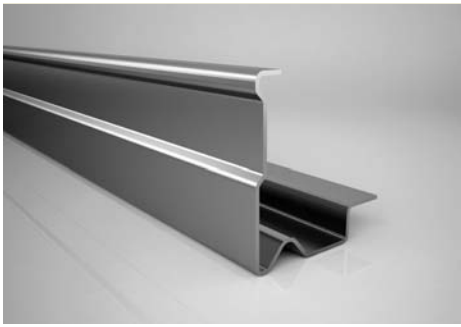
OTM-16



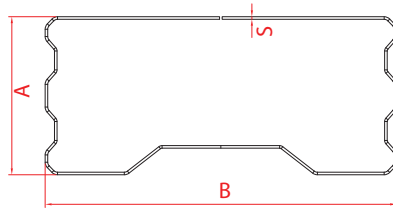
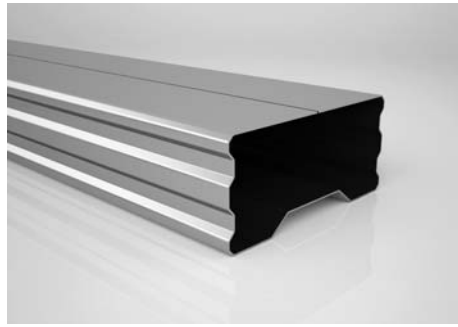
OTM-17



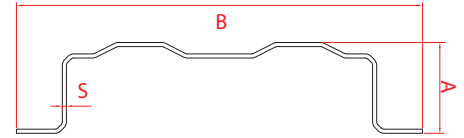
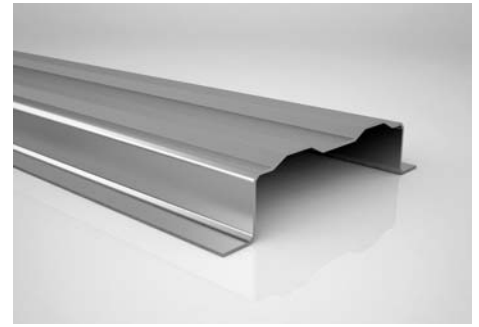
OTM-18



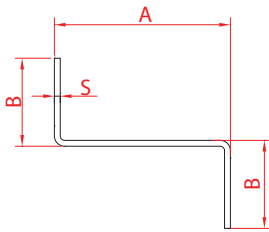
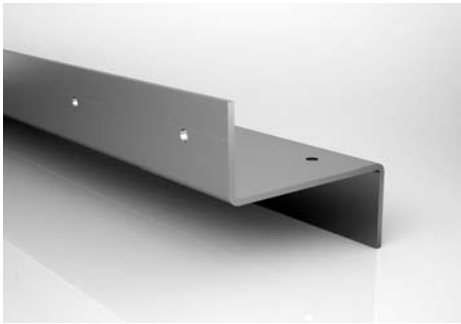
OTM-19



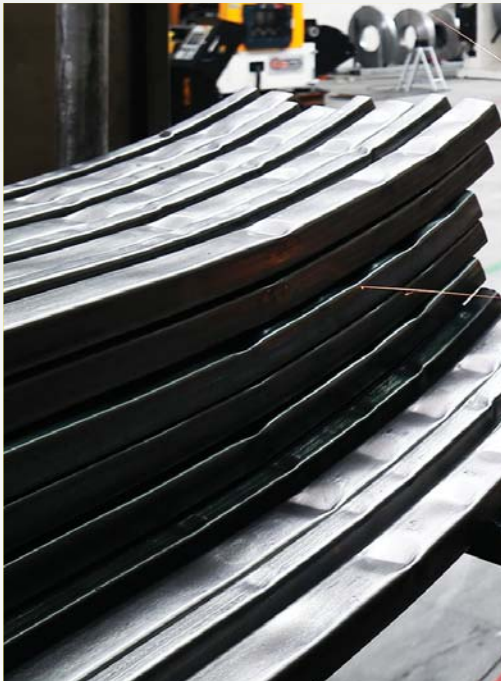
OTM-20



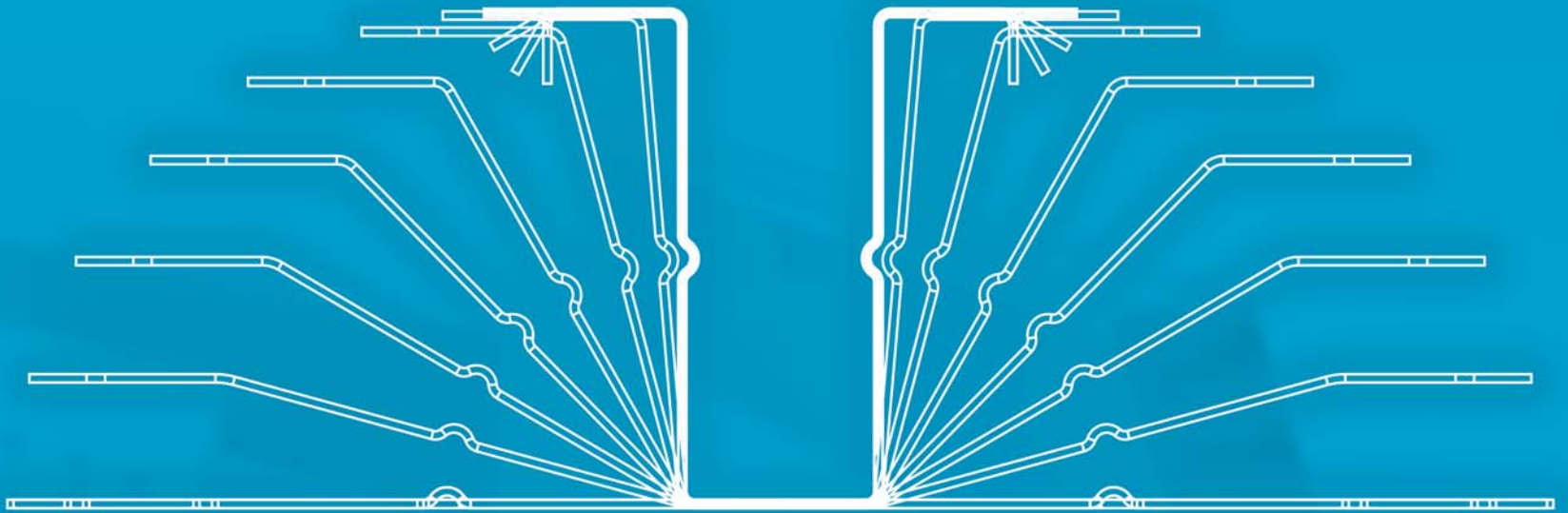
OTM-21



OTM-22



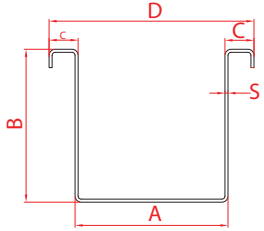




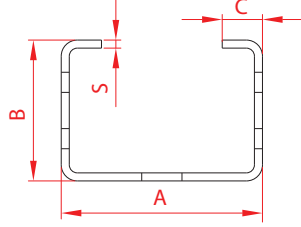
## SOLAR ENERGY SYSTEMS PROFILES

- Standard & special open profiles,
- Standard & special seam welded profiles,
- Solar construction profiles with special section & holes.
- Omega profiles

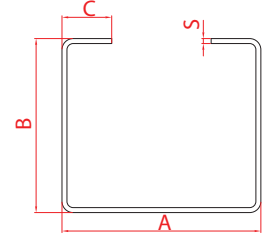
The design and production of our molds and fixtures that are using in every stage of the production are produced by our own experienced technical team. On special profiles punching, bending, edge reducing, edging, end cutting and similar requested applications can be performed to have them as semi and finished product.



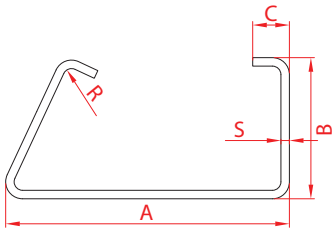
SLR-01



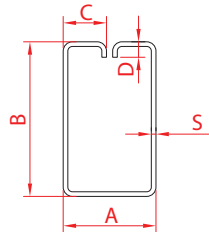
SLR-02



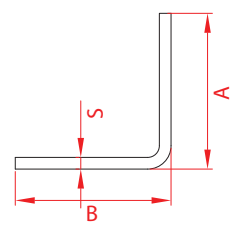
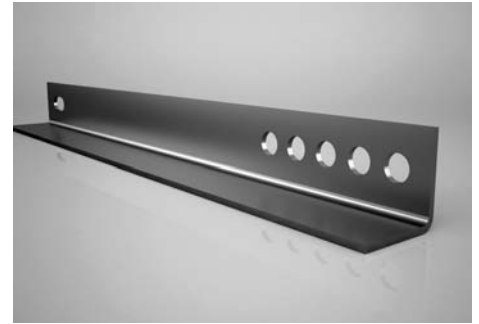
SLR-03



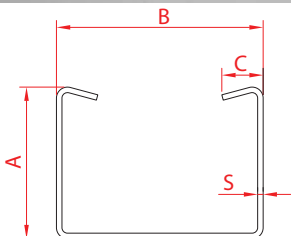
SLR-04



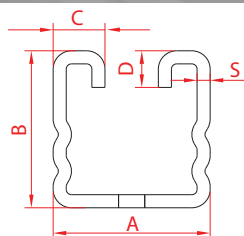
SLR-05



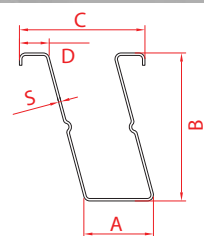
SLR-06



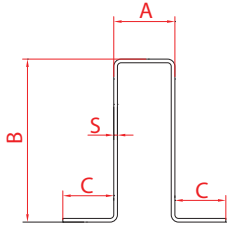
SLR-07



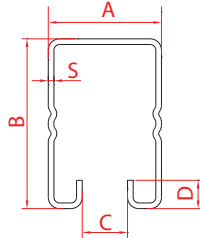
SLR-08



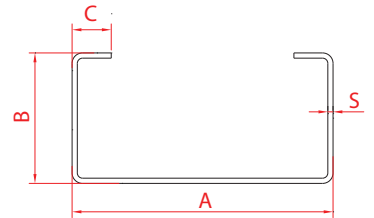
SLR-09



SLR-10



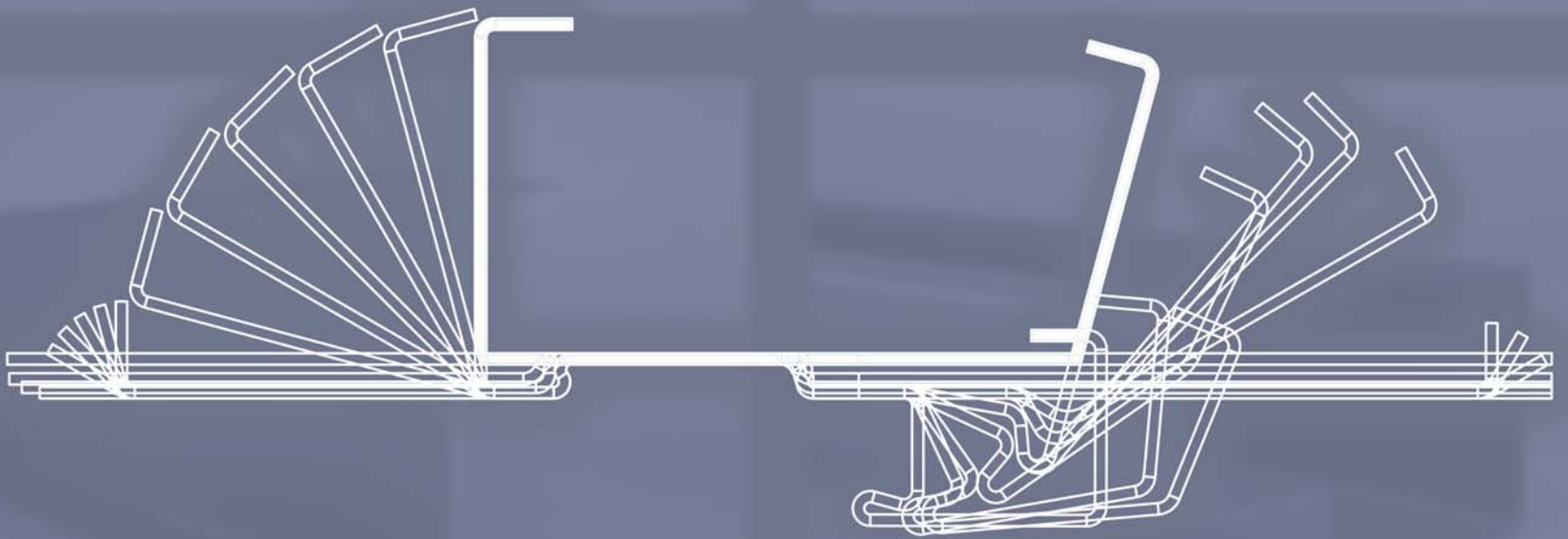
SLR-11



SLR-12





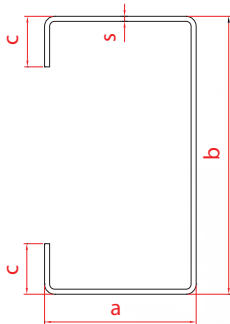
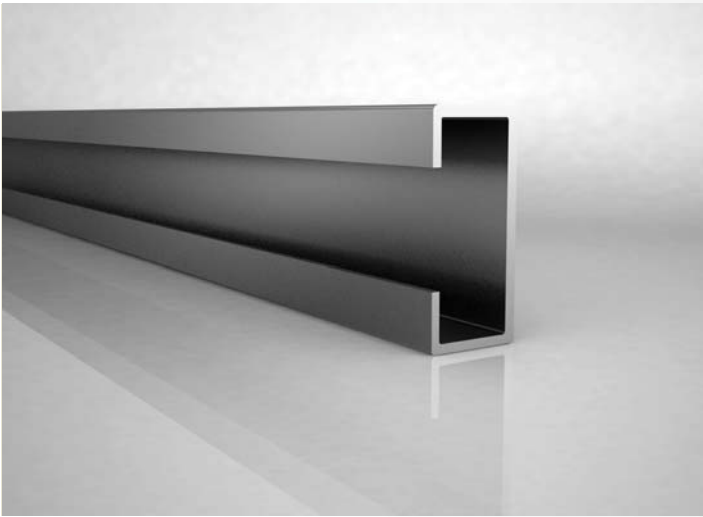


## CIVIL WORKS & STEEL CONSTRUCTIONS

- C, Z & SIGMA profiles
- Standard industrial tubes & profiles
- Crane & cornice profiles
- Scaffolding special profiles
- Window & door sub-frame profiles
- PVC joinery support profiles
- Gypsum board wall & suspended ceiling profiles
- Special profiles for steel construction
- Fire door frame
- Door frame

The design and production of our molds and fixtures that are using in every stage of the production are produced by our own experienced technical team. On special profiles punching, bending, edge reducing, edging, end cutting and similar requested applications can be performed to have them as semi and finished product.

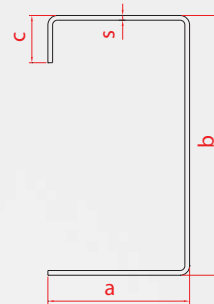
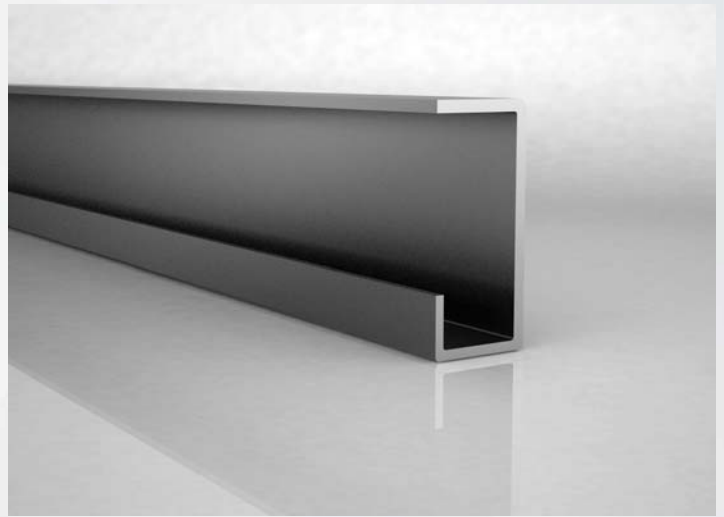
## C PROFILES



Dimensions	A (mm)	B (mm)	C (mm)	S (mm)
Min.	5	10	10	0,5
Max.	245	500	150	8

All types of C profiles which their minimum and maximum measures are mentioned above are manufactured by our company.

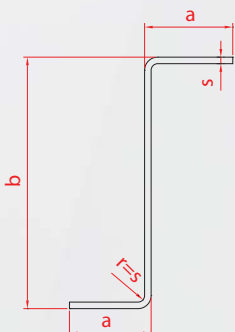
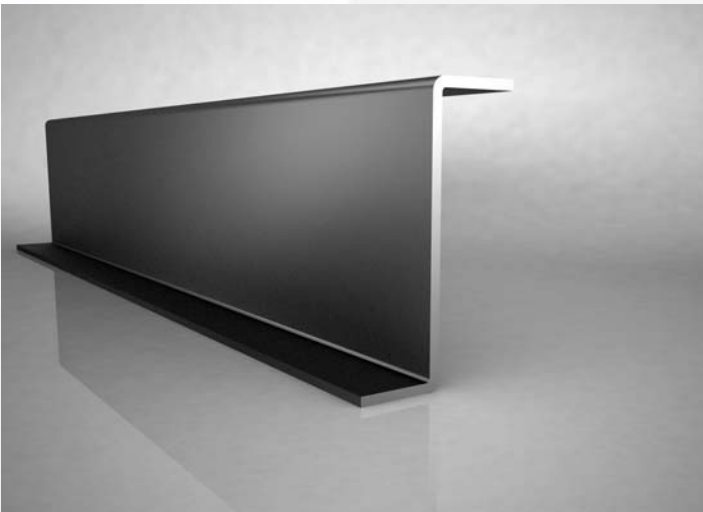
## C PROFILES



Dimensions	A (mm)	B (mm)	C (mm)	S (mm)
Min.	5	10	10	0,5
Max.	245	500	150	8

All types of C profiles which their minimum and maximum measures are mentioned above are manufactured by our company.

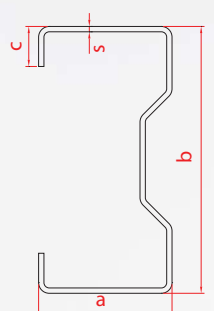
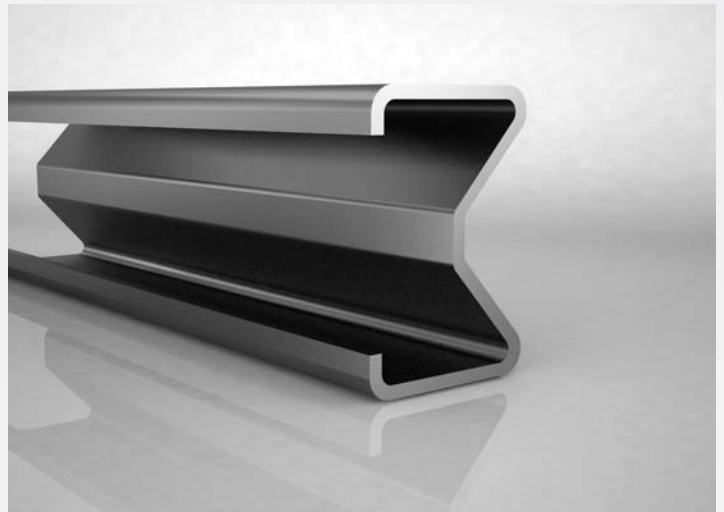
## Z PROFILES



Dimensions	A (mm)	B (mm)	S (mm)
Min.	5	10	0,5
Max.	120	500	8

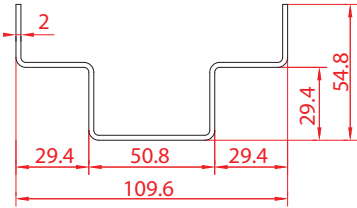
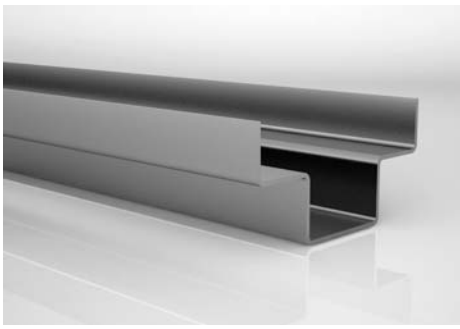
All types of Z profiles which their minimum and maximum measures are mentioned above are manufactured by our company.

## SIGMA PROFILES

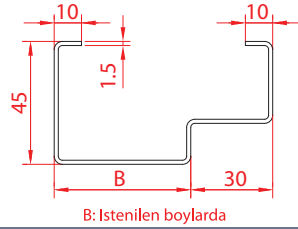
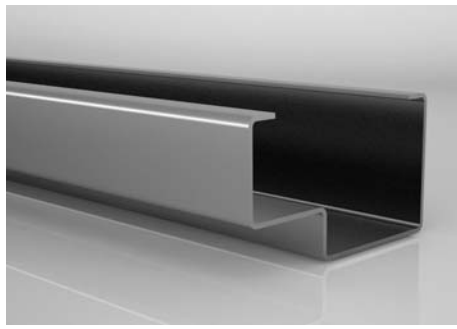


Dimensions	A (mm)	B (mm)	C (mm)	S (mm)
Min.	30	40	10	0,5
Max.	150	500	100	8

All types of Sigma profiles which their minimum and maximum measures are mentioned above are manufactured by our company.

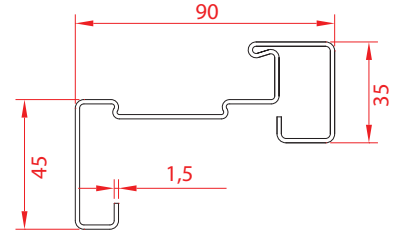
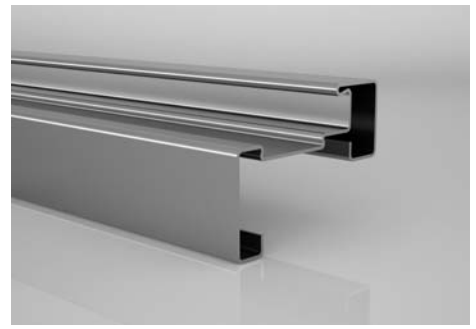


INS-01

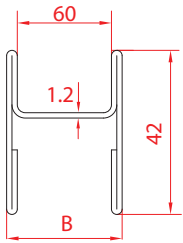


B: İstenilen boylarda

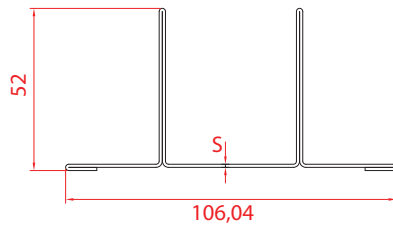
INS-02



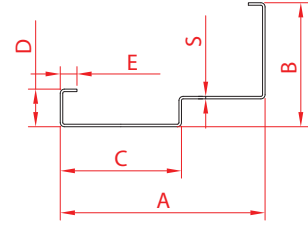
INS-03



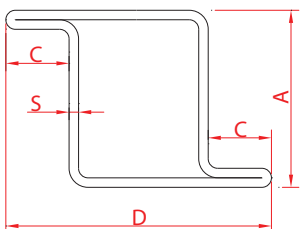
INS-04



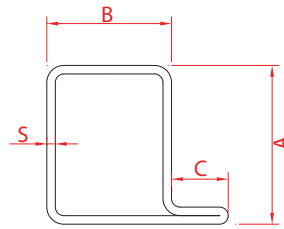
INS-05



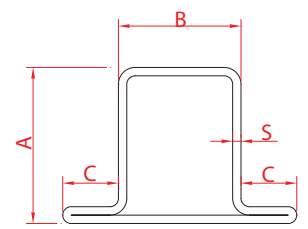
INS-06



INS-07

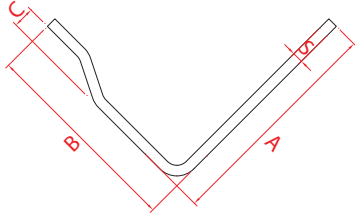


INS-08

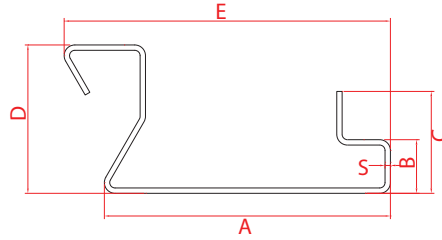
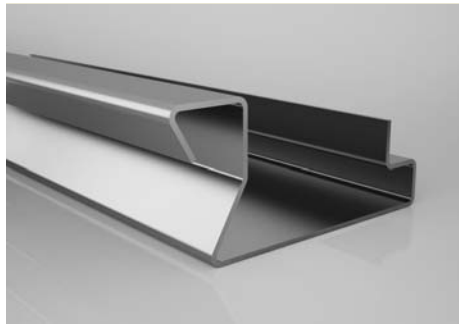


INS-09

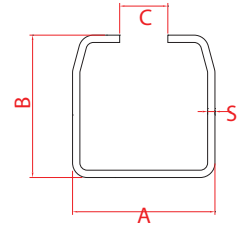
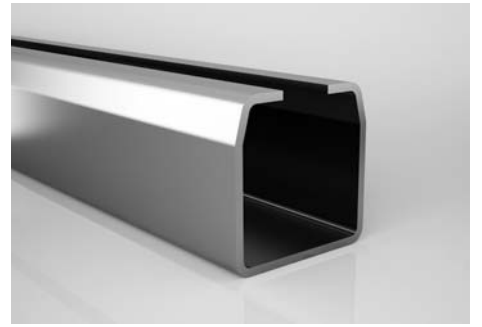




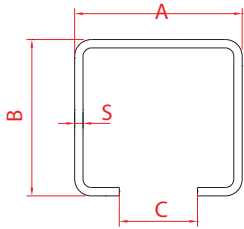
INS-10



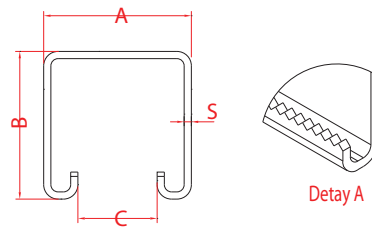
INS-11



INS-12

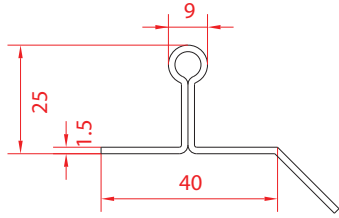


INS-13

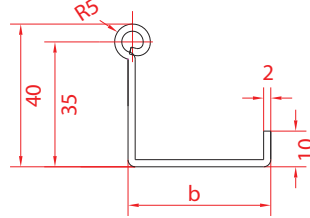


INS-14

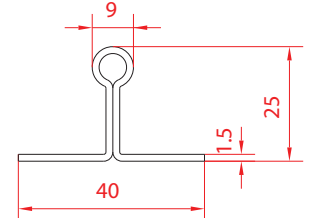




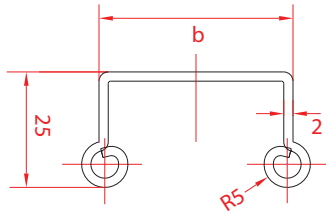
TRM-01



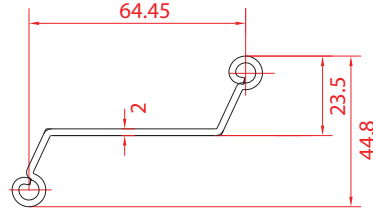
TRM-02



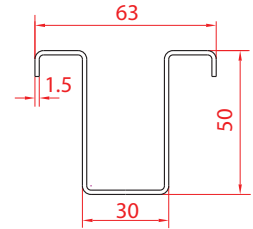
TRM-03



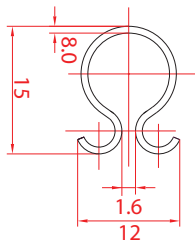
TRM-04



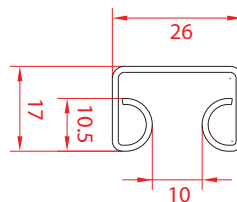
TRM-05



TRM-06

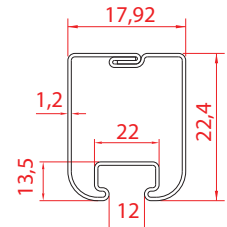


TRM-07

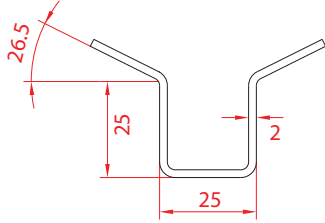


S=1.2 mm.

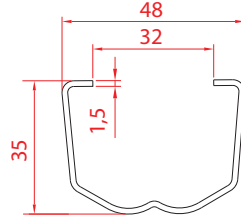
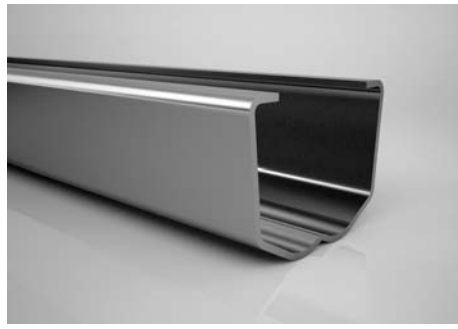
TRM-08



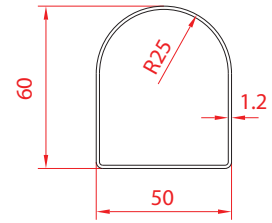
TRM-09



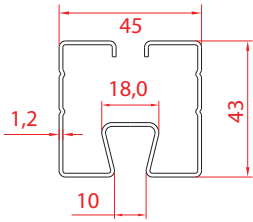
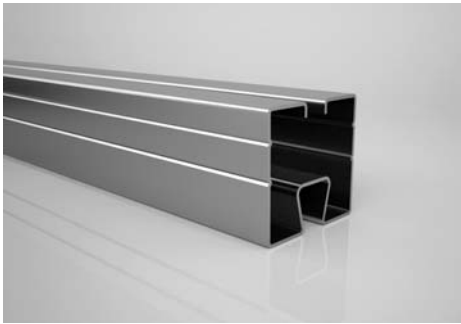
TRM-10



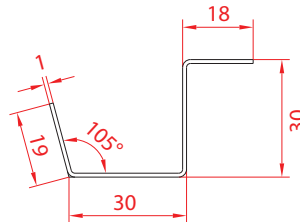
TRM-11



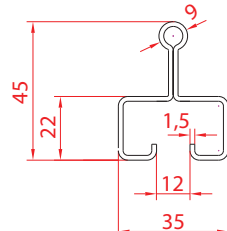
TRM-12



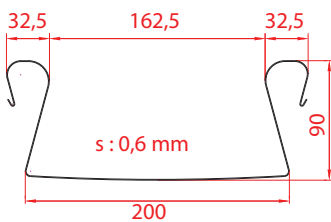
TRM-13



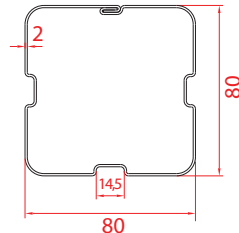
TRM-14



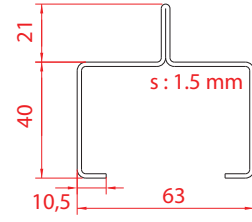
TRM-15



TRM-16

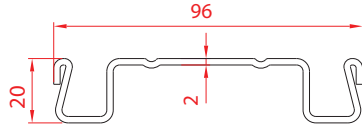


TRM-17

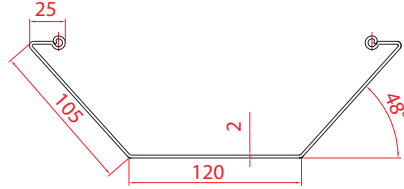


TRM-18

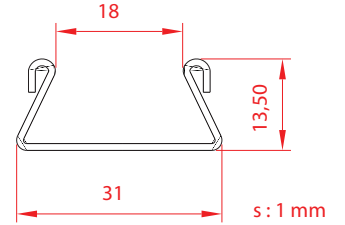




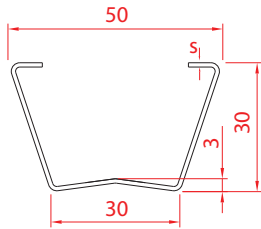
TRM-19



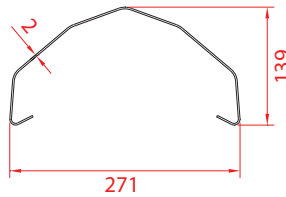
TRM-20



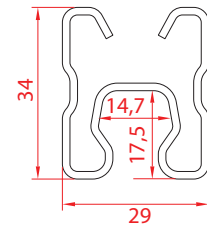
TRM-21



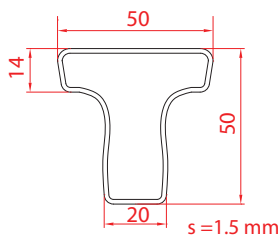
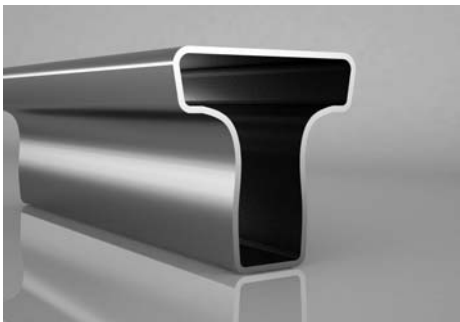
TRM-22



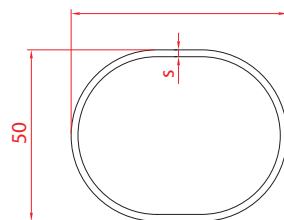
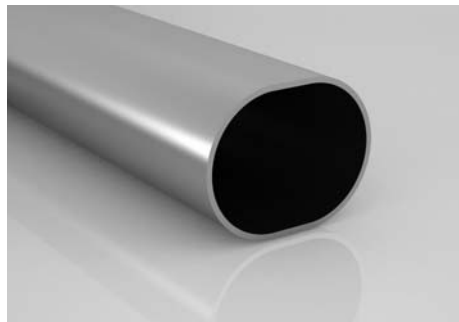
TRM-23



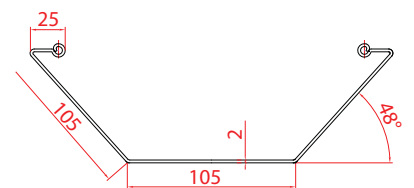
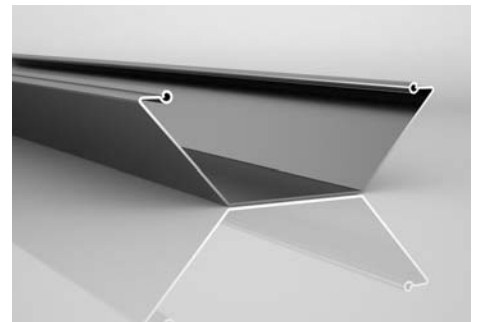
TRM-24



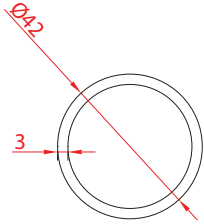
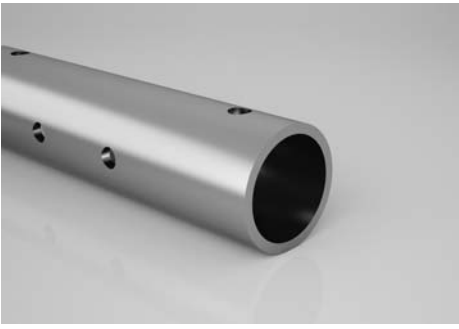
TRM-25



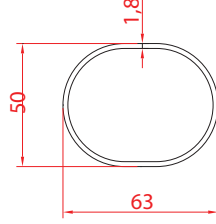
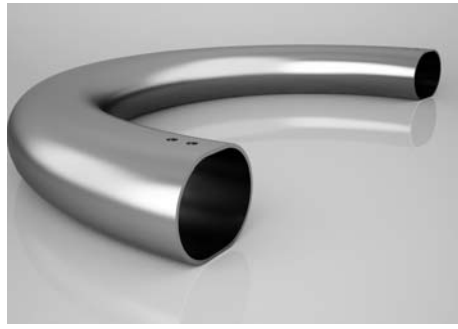
TRM-26



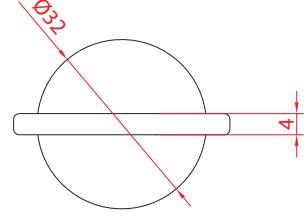
TRM-27



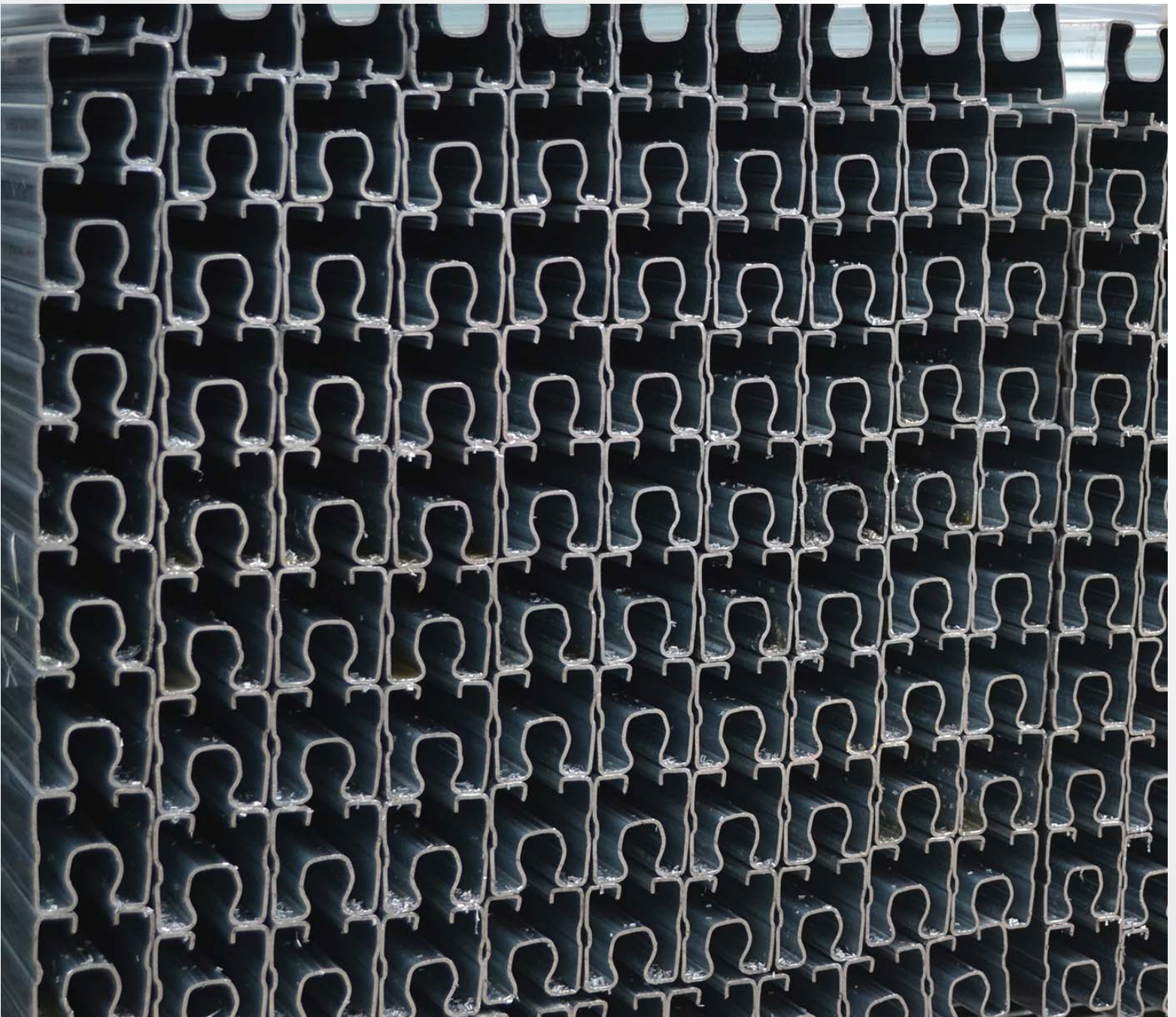
TRM-28



TRM-29



TRM-30





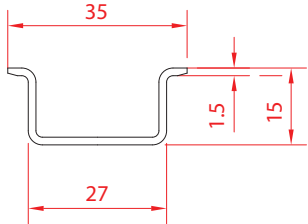


## PROFILES FOR ELECTRIC & ELECTRONICS

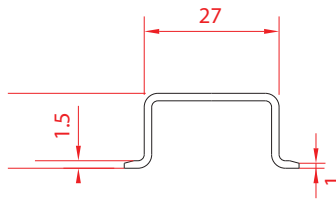
- Connector mounting rails
- Cable carrying profiles
- Cable trays
- Profiles for domestic appliances
- Handle profiles
- Frame profiles
- Special profiles with inox material
- Oven burner pipes
- Electrical panel profiles
- Cable glands

The design and production of our molds and fixtures that are using in every stage of the production are produced by our own experienced technical team. On special profiles punching, bending, edge reducing, edging, end cutting and similar requested applications can be performed to have them as semi and finished product.

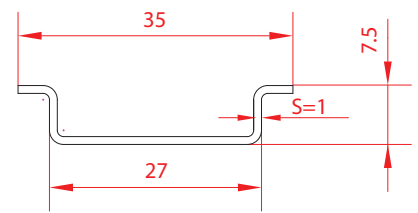




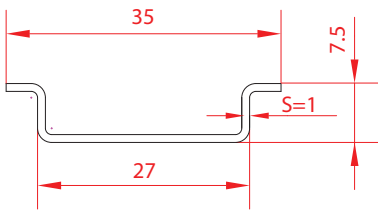
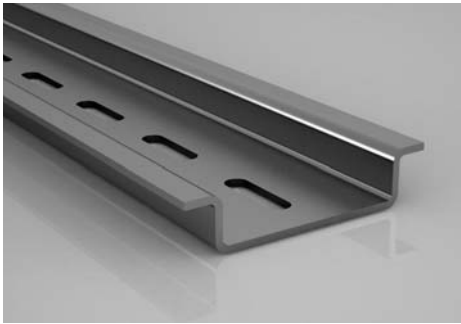
KLM-01



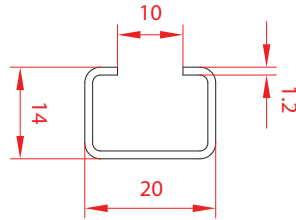
KLM-02



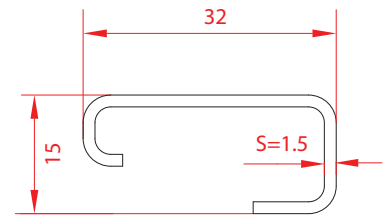
KLM-03



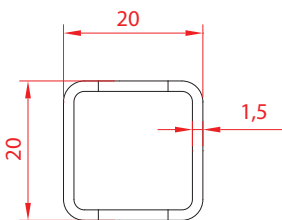
KLM-04



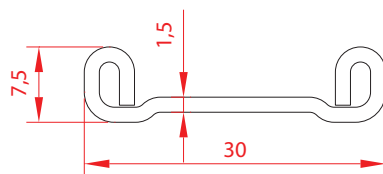
KLM-05



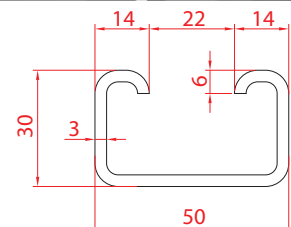
KLM-06



KLM-07



KLM-08



KLM-09